

ABCF1 Polyclonal Antibody

Description

Product type	Primary Antibody
Code	BT-AP00106
Host	Rabbit
Isotype	IgG
Size	20ul, 50ul, 100ul
Immunogen	Synthesized peptide derived from ABCF1 . at AA range: 760-840
Mol wt	95926
Species reactivity	Human, Mouse, Rat
Clonality	Polyclonal
Recommended application	WB, ELISA
Concentration	1 mg/ml
Full name	ABCF1 Antibody
Synonyms	ABCF1; ABC50; ATP-binding cassette sub-family F member 1; ATP-binding cassette 50; TNF-alpha-stimulated ABC protein

This product is for research use only, not for use in human, therapeutic or diagnostic procedure.

Background

The ATP binding cassette subfamily F member 1 encoded by ABCF1 is a member of the superfamily of ATP-binding cassette (ABC) transporters. ABC proteins transport various molecules across extra- and intra-cellular membranes. ABC genes are divided into seven distinct subfamilies (ABC1, MDR/TAP, MRP, ALD, OABP, GCN20, White). This protein is a member of the GCN20 subfamily. Unlike other members of the superfamily, this protein lacks the transmembrane domains which are characteristic of most ABC transporters. This protein may be regulated by tumor necrosis factor-alpha and play a role in enhancement of protein synthesis and the inflammation process.

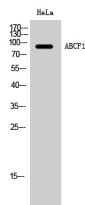
Recommended Dilution

WB: 1: 500 - 1: 2000

ELISA: 1: 10000

Not yet tested in other applications.

Images



Western Blot analysis of HeLa cells using ABCF1 Polyclonal Antibody

Storage

-20°C for one year