

Acetyl Histone H1 (K25) Polyclonal Antibody

Description

Product type	Primary Antibody
Code	BT-AP00155
Host	Rabbit
Isotype	IgG
Size	20ul, 50ul, 100ul
Immunogen	The antiserum was produced against synthesized peptide derived from human Histone H1 around the acetylated site of Lys25. AA range:131-180
Mol wt	21010
Species reactivity	Human, Monkey
Clonality	Polyclonal
Recommended application	WB, IHC-p, ELISA
Concentration	1 mg/ml
Full name	Acetyl Histone H1 (K25) Antibody
Synonyms	H1FOO; H1OO; OSH1; Histone H1oo; Oocyte-specific histone H1; Oocyte-specific linker histone H1; osH1

This product is for research use only, not for use in human, therapeutic or diagnostic procedure.

Background

Histones are basic nuclear proteins that are responsible for the nucleosome structure of the chromosomal fiber in eukaryotes. Nucleosomes consist of approximately 146 bp of DNA wrapped around a histone octamer composed of pairs of each of the four core histones (H2A, H2B, H3, and H4). The chromatin fiber is further compacted through the interaction of a linker histone, H1, with the DNA between the nucleosomes to form higher order chromatin structures. The H1 histone family member O, oocyte specific encoded is a replication-independent histone that is a member of the histone H1 family. H1FOO contains introns, unlike most histone genes. The related mouse gene is expressed only in oocytes.

Recommended Dilution

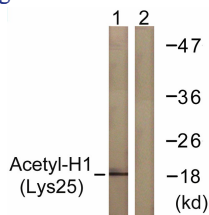
WB: 1: 500 - 1: 2000

IHC: 1: 100 - 1: 300

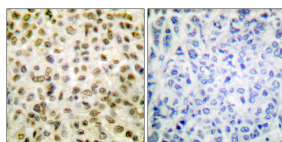
ELISA: 1: 20000

Not yet tested in other applications.

Images



Western blot analysis of lysates from COS7 cells, treated with TSA 400nM 24h, using Histone H1 (Acetyl-Lys25) Antibody. The lane on the right is blocked with the synthesized peptide.



Immunohistochemistry analysis of paraffin-embedded human breast carcinoma tissue, using Histone H1 (Acetyl-Lys25) Antibody. The picture on the right is blocked with the synthesized peptide.

Storage

-20°C for one year

501 Changsheng S Rd, Nanhu Dist, Jiaxing, Zhejiang, China

Tel: 86 21 31007137 | E-mail: save@bt-laboratory.com | www.bt-laboratory.com