

ADP-GK Polyclonal Antibody

Description

Product type	Primary Antibody
Code	BT-AP00277
Host	Rabbit
Isotype	IgG
Size	20ul, 50ul, 100ul
Immunogen	The antiserum was produced against synthesized peptide derived from human ADPGK. AA range:241-290
Mol wt	54089
Species reactivity	Human, Mouse, Rat
Clonality	Polyclonal
Recommended application	WB, IHC-p, IF, ELISA
Concentration	1 mg/ml
Full name	ADP-GK Antibody
Synonyms	ADPGK; PSEC0260; ADP-dependent glucokinase; ADP-GK; ADPGK; RbBP-35

This product is for research use only, not for use in human, therapeutic or diagnostic procedure.

Background

ADPGK catalyzes the ADP-dependent phosphorylation of glucose to glucose-6-phosphate and may play a role in glycolysis, possibly during ischemic conditions.

Recommended Dilution

WB: 1: 500 - 1: 2000

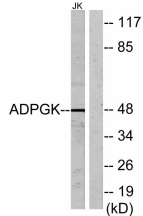
IHC: 1: 100 - 1: 300

IF: 1: 200 - 1: 1000

ELISA: 1: 40000

Not yet tested in other applications.

Images



Western blot analysis of lysates from Jurkat cells, using ADPGK Antibody. The lane on the right is blocked with the synthesized peptide.

Storage

-20°C for one year