

ALMS1 Polyclonal Antibody

Description

Product type	Primary Antibody
Code	BT-AP00382
Host	Rabbit
Isotype	IgG
Size	20ul, 50ul, 100ul
Immunogen	Synthesized peptide derived from ALMS1 . at AA range: 1530-1610
Mol wt	460937
Species reactivity	Human
Clonality	Polyclonal
Recommended application	WB, IHC-p, ELISA
Concentration	1 mg/ml
Full name	ALMS1 Antibody
Synonyms	ALMS1; KIAA0328; Alstrom syndrome protein 1

This product is for research use only, not for use in human, therapeutic or diagnostic procedure.

Background

ALMS1 encodes a protein containing a large tandem-repeat domain as well as additional low complexity regions. The encoded protein (ALMS1, centrosome and basal body associated protein) functions in microtubule organization, particularly in the formation and maintenance of cilia. Mutations ALMS1 cause Alstrom syndrome. There is a pseudogene for ALMS1 located adjacent in the same region of chromosome 2. Alternative splice variants have been described but their full length nature has not been determined.

Recommended Dilution

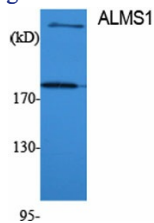
WB: 1: 500 - 1: 2000

IHC: 1: 100 - 1: 300

ELISA: 1: 40000

Not yet tested in other applications.

Images



Western Blot analysis of various cells using ALMS1 Polyclonal Antibody

Storage

-20°C for one year