

Angptl7 Polyclonal Antibody

Description

Product type	Primary Antibody
Code	BT-AP00450
Host	Rabbit
Isotype	IgG
Size	20ul, 50ul, 100ul
Immunogen	The antiserum was produced against synthesized peptide derived from human ANGPTL7. AA range:297-346
Mol wt	40018
Species reactivity	Human, Mouse
Clonality	Polyclonal
Recommended application	WB, IHC-p, ELISA
Concentration	1 mg/ml
Full name	Angptl7 Antibody
Synonyms	ANGPTL7; CDT6; Angiopoietin-related protein 7; Angiopoietin-like factor; Angiopoietin-like protein 7; Cornea-derived transcript 6 protein

This product is for research use only, not for use in human, therapeutic or diagnostic procedure.

Background

ANGPTL7 (Angiopoietin Like 7) is a Protein Coding gene. An important paralog of this gene is FGB.

Recommended Dilution

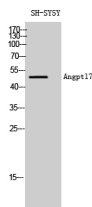
WB: 1: 500 - 1: 2000

IHC: 1: 100 - 1: 300

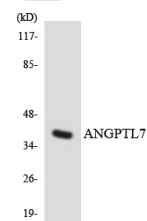
ELISA: 1: 10000

Not yet tested in other applications.

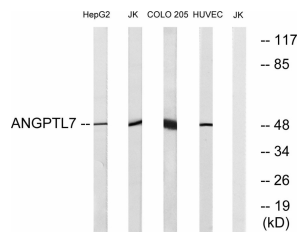
Images



Western Blot analysis of SH-SY5Y cells using Angptl7 Polyclonal Antibody diluted at 1:2000



Western blot analysis of the lysates from HeLa cells using ANGPTL7 antibody.



Storage

-20°C for one year

501 Changsheng S Rd, Nanhu Dist, Jiaxing, Zhejiang, China

Tel: 86 21 31007137 | E-mail: save@bt-laboratory.com | www.bt-laboratory.com