

## ARX Polyclonal Antibody

### Description

<b>Product type</b>	Primary Antibody
<b>Code</b>	BT-AP00639
<b>Host</b>	Rabbit
<b>Isotype</b>	IgG
<b>Size</b>	20ul, 50ul, 100ul
<b>Immunogen</b>	Synthesized peptide derived from ARX . at AA range: 250-330
<b>Mol wt</b>	58160
<b>Species reactivity</b>	Human, Mouse, Rat
<b>Clonality</b>	Polyclonal
<b>Recommended application</b>	WB, ELISA
<b>Concentration</b>	1 mg/ml
<b>Full name</b>	ARX Antibody
<b>Synonyms</b>	ARX; Homeobox protein ARX; Aristaless-related homeobox

**This product is for research use only, not for use in human, therapeutic or diagnostic procedure.**

### Background

ARX is a homeobox-containing gene expressed during development. Homeobox protein ARX contains two conserved domains, a C-peptide (or aristaless domain) and the prd-like class homeobox domain. It is a member of the group-II aristaless-related protein family whose members are expressed primarily in the central and/or peripheral nervous system. This gene is thought to be involved in CNS development. Expansion of a polyalanine tract and other mutations in this gene cause X-linked mental retardation and epilepsy.

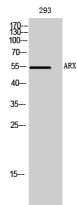
### Recommended Dilution

WB: 1: 500 - 1: 2000

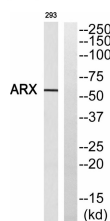
ELISA: 1: 5000

Not yet tested in other applications.

### Images



Western Blot analysis of 293 cells using ARX Polyclonal Antibody cells nucleus.



Western blot analysis of ARX Antibody. The lane on the right is blocked with the ARX peptide.

## Storage

-20°C for one year

501 Changsheng S Rd, Nanhu Dist, Jiaxing, Zhejiang, China

Tel: 86 21 31007137 | E-mail: [save@bt-laboratory.com](mailto:save@bt-laboratory.com) | [www.bt-laboratory.com](http://www.bt-laboratory.com)