

## Asf1a Polyclonal Antibody

### Description

<b>Product type</b>	Primary Antibody
<b>Code</b>	BT-AP00666
<b>Host</b>	Rabbit
<b>Isotype</b>	IgG
<b>Size</b>	20ul, 50ul, 100ul
<b>Immunogen</b>	The antiserum was produced against synthesized peptide derived from human ASF1A. AA range:121-170
<b>Mol wt</b>	22969
<b>Species reactivity</b>	Human, Mouse
<b>Clonality</b>	Polyclonal
<b>Recommended application</b>	WB, IF, ELISA
<b>Concentration</b>	1 mg/ml
<b>Full name</b>	Asf1a Antibody
<b>Synonyms</b>	ASF1A; CGI-98; HSPC146; Histone chaperone ASF1A; Anti-silencing function protein 1 homolog A; hAsf1; hAsf1a; CCG1-interacting factor A; CIA; hCIA

**This product is for research use only, not for use in human, therapeutic or diagnostic procedure.**

### Background

ASF1A encodes a member of the H3/H4 family of histone chaperone proteins and is similar to the anti-silencing function-1 gene in yeast. The protein (anti-silencing function 1A histone chaperone) is a key component of a histone donor complex that functions in nucleosome assembly. It interacts with histones H3 and H4, and functions together with a chromatin assembly factor during DNA replication and repair.

### Recommended Dilution

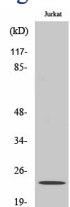
WB: 1: 500 - 1: 2000

IF: 1: 200 - 1: 1000

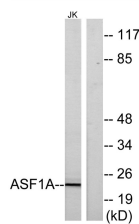
ELISA: 1: 20000

Not yet tested in other applications.

### Images



Western Blot analysis of various cells using Asf1a Polyclonal Antibody cells nucleus.



Western blot analysis of lysates from Jurkat cells, using ASF1A Antibody. The lane on the right is blocked with the synthesized peptide.

## Storage

-20°C for one year

501 Changsheng S Rd, Nanhu Dist, Jiaxing, Zhejiang, China

Tel: 86 21 31007137 | E-mail: [save@bt-laboratory.com](mailto:save@bt-laboratory.com) | [www.bt-laboratory.com](http://www.bt-laboratory.com)