

ATF-7 Polyclonal Antibody

Description

Product type	Primary Antibody
Code	BT-AP00704
Host	Rabbit
Isotype	IgG
Size	20ul, 50ul, 100ul
Immunogen	The antiserum was produced against synthesized peptide derived from human ATF7. AA range:41-90
Mol wt	52967
Species reactivity	Human, Mouse
Clonality	Polyclonal
Recommended application	WB, IHC-p, IF, ELISA
Concentration	1 mg/ml
Full name	ATF-7 Antibody
Synonyms	ATF7; ATFA; Cyclic AMP-dependent transcription factor ATF-7; cAMP-dependent transcription factor ATF-7; Activating transcription factor 7; Transcription factor ATF-A

This product is for research use only, not for use in human, therapeutic or diagnostic procedure.

Background

Eukaryotic gene transcription is regulated by sequence-specific transcription factors that bind modular cis acting promoter and enhancer elements. The ATF/CREB transcription factor family binds the palindromic cAMP response element (CRE) octanucleotide TGACGTCA. The best characterized members of this gene family include CREB-1, CREB-2 (also designated ATF-4), CRE-BPa, LZIP (also designated CREB3 and Luman), CREM-1, CREM-2, ATF-1, ATF-2, ATF-3, ATF-5, ATF-6 and ATF-7. This family of proteins contain highly divergent N-terminal domains, but share a C-terminal leucine zipper for dimerization and DNA binding. ATF-5 (ATF_x), which can localize to the cytoplasm or the nucleus, binds DNA as a dimer. It interacts with CCND3 and PTP4A1.

Recommended Dilution

WB: 1: 500 - 1: 2000

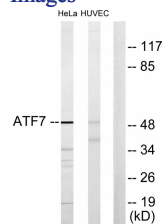
IHC: 1: 100 - 1: 300

IF: 1: 200 - 1: 1000

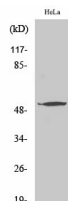
ELISA: 1: 20000

Not yet tested in other applications.

Images



Western blot analysis of lysates from HeLa and HUVEC cells, using ATF7 Antibody. The lane on the right is blocked with the synthesized peptide.



Western Blot analysis of various cells using ATF-7 Polyclonal Antibody

Storage

-20°C for one year

501 Changsheng S Rd, Nanhu Dist, Jiaxing, Zhejiang, China

Tel: 86 21 31007137 | E-mail: save@bt-laboratory.com | www.bt-laboratory.com