

ATP7A Polyclonal Antibody

Description

Product type	Primary Antibody
Code	BT-AP00747
Host	Rabbit
Isotype	IgG
Size	20ul, 50ul, 100ul
Immunogen	The antiserum was produced against synthesized peptide derived from human ATP7A. AA range:591-640
Mol wt	163335/165110/172078/154357
Species reactivity	Human, Mouse, Rat
Clonality	Polyclonal
Recommended application	IHC-p, ELISA
Concentration	1 mg/ml
Full name	ATP7A Antibody
Synonyms	ATP7A; MC1; MNK; Copper-transporting ATPase 1; Copper pump 1; Menkes disease-associated protein

This product is for research use only, not for use in human, therapeutic or diagnostic procedure.

Background

ATP7A (ATPase copper transporting alpha) encodes a transmembrane protein that functions in copper transport across membranes. This protein is localized to the trans Golgi network, where it is predicted to supply copper to copper-dependent enzymes in the secretory pathway. It relocates to the plasma membrane under conditions of elevated extracellular copper, and functions in the efflux of copper from cells. Mutations in ATP7A are associated with Menkes disease, X-linked distal spinal muscular atrophy, and occipital horn syndrome. Alternatively-spliced transcript variants have been observed.

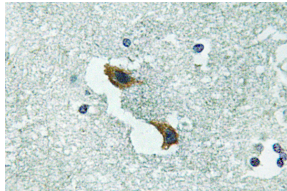
Recommended Dilution

IHC: 1: 100 - 1: 300

ELISA: 1: 40000

Not yet tested in other applications.

Images



Immunohistochemistry analysis of ATP7A antibody in paraffin-embedded human brain tissue.

Storage

-20°C for one year