

ATRIP Polyclonal Antibody

Description

Product type	Primary Antibody
Code	BT-AP00755
Host	Rabbit
Isotype	IgG
Size	20ul, 50ul, 100ul
Immunogen	The antiserum was produced against synthesized peptide derived from human ATRIP. AA range:34-83
Mol wt	85838
Species reactivity	Human, Mouse, Rat
Clonality	Polyclonal
Recommended application	WB, IHC-p, IF, ELISA
Concentration	1 mg/ml
Full name	ATRIP Antibody
Synonyms	ATRIP; AGS1; ATR-interacting protein; ATM and Rad3-related-interacting protein

This product is for research use only, not for use in human, therapeutic or diagnostic procedure.

Background

ATRIP encodes an essential component of the DNA damage checkpoint. The encoded protein (ATR interacting protein) binds to single-stranded DNA coated with replication protein A. The protein also interacts with the ataxia telangiectasia and Rad3 related protein kinase, resulting in its accumulation at intranuclear foci induced by DNA damage. Multiple transcript variants encoding different isoforms have been found for ATRIP.

Recommended Dilution

WB: 1: 500 - 1: 2000

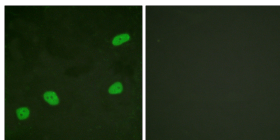
IHC: 1: 100 - 1: 300

IF: 1: 200 - 1: 1000

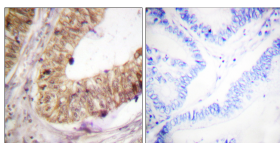
ELISA: 1: 5000

Not yet tested in other applications.

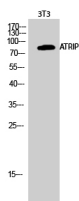
Images



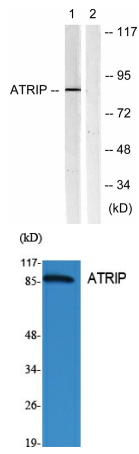
Immunofluorescence analysis of HeLa cells, using ATRIP Antibody. The picture on the right is blocked with the synthesized peptide.



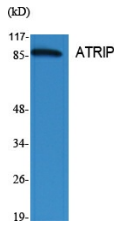
Immunohistochemistry analysis of paraffin-embedded human colon carcinoma tissue, using ATRIP Antibody. The picture on the right is blocked with the synthesized peptide.



Western Blot analysis of 3T3 cells using ATRIP Polyclonal Antibody cells nucleus.



Western blot analysis of lysates from NIH/3T3 cells, using ATRIP Antibody. The lane on the right is blocked with the synthesized peptide.



Western Blot analysis of various cells using ATRIP Polyclonal Antibody cells nucleus.

Storage

-20°C for one year

501 Changsheng S Rd, Nanhu Dist, Jiaxing, Zhejiang, China

Tel: 86 21 31007137 | E-mail: save@bt-laboratory.com | www.bt-laboratory.com