

## B-ATF Polyclonal Antibody

### Description

Product type	Primary Antibody
Code	BT-AP00839
Host	Rabbit
Isotype	IgG
Size	20ul, 50ul, 100ul
Immunogen	The antiserum was produced against synthesized peptide derived from human BATF. AA range:10-59
Mol wt	14120
Species reactivity	Human, Mouse
Clonality	Polyclonal
Recommended application	IHC-p, ELISA
Concentration	1 mg/ml
Full name	B-ATF Antibody
Synonyms	BATF; Basic leucine zipper transcriptional factor ATF-like; B-cell-activating transcription factor; B-ATF; SF-HT-activated gene 2 protein; SFA-2

This product is for research use only, not for use in human, therapeutic or diagnostic procedure.

### Background

The basic leucine zipper ATF-like transcription factor encoded by BATF is a nuclear basic leucine zipper protein that belongs to the AP-1/ATF superfamily of transcription factors. The leucine zipper of this protein mediates dimerization with members of the Jun family of proteins. This protein is thought to be a negative regulator of AP-1/ATF transcriptional events.

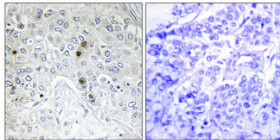
### Recommended Dilution

IHC: 1: 100 - 1: 300

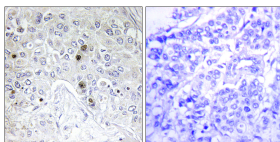
ELISA: 1: 5000

Not yet tested in other applications.

### Images



Immunohistochemical analysis of paraffin-embedded Human breast cancer. Antibody was diluted at 1:100(4° overnight). High-pressure and temperature Tris-EDTA,pH8.0 was used for antigen retrieval. Negative contrl (right) obtained from antibody was pre-absorbed by immunogen peptide.



Immunohistochemistry analysis of paraffin-embedded human breast carcinoma tissue, using BATF Antibody. The picture on the right is blocked with the synthesized peptide.

### Storage

-20°C for one year