

## Beclin-1 Polyclonal Antibody

### Description

<b>Product type</b>	Primary Antibody
<b>Code</b>	BT-AP00883
<b>Host</b>	Rabbit
<b>Isotype</b>	IgG
<b>Size</b>	20ul, 50ul, 100ul
<b>Immunogen</b>	Synthesized peptide derived from Beclin-1 . at AA range: 110-190
<b>Mol wt</b>	51896
<b>Species reactivity</b>	Human, Mouse
<b>Clonality</b>	Polyclonal
<b>Recommended application</b>	WB, ELISA
<b>Concentration</b>	1 mg/ml
<b>Full name</b>	Beclin-1 Antibody
<b>Synonyms</b>	beclin 1, autophagy related

This product is for research use only, not for use in human, therapeutic or diagnostic procedure.

### Background

BECN1 (beclin 1) encodes a protein that regulates autophagy, a catabolic process of degradation induced by starvation. The encoded protein is a component of the phosphatidylinositol-3-kinase (PI3K) complex which mediates vesicle-trafficking processes. This protein is thought to play a role in multiple cellular processes, including tumorigenesis, neurodegeneration and apoptosis. Alternative splicing results in multiple transcript variants.

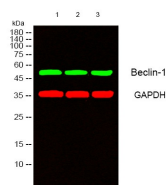
### Recommended Dilution

WB: 1: 500 - 2000

ELISA: 1: 10000 - 20000

Not yet tested in other applications.

### Images



Western Blot analysis of mouse-brain mouse-lung cells using Beclin-1 Polyclonal Antibody diluted at 1:500.  
Secondary antibody was diluted at 1:20000

## Storage

-20°C for one year

501 Changsheng S Rd, Nanhu Dist, Jiaxing, Zhejiang, China

Tel: 86 21 31007137 | E-mail: [save@bt-laboratory.com](mailto:save@bt-laboratory.com) | [www.bt-laboratory.com](http://www.bt-laboratory.com)