

## BRMS-1 Polyclonal Antibody

### Description

|                                |   |
|--------------------------------|---|
| <b>Product type</b>            | Primary Antibody  |
| <b>Code</b>                    | BT-AP00980  |
| <b>Host</b>                    | Rabbit  |
| <b>Isotype</b>                 | IgG   |
| <b>Size</b>                    | 20ul, 50ul, 100ul   |
| <b>Immunogen</b>               | The antiserum was produced against synthesized peptide derived from human BRMS1. AA range:21-70 |
| <b>Mol wt</b>                  | 181279  |
| <b>Species reactivity</b>      | Human, Mouse, Rat   |
| <b>Clonality</b>               | Polyclonal  |
| <b>Recommended application</b> | WB, IHC-p, ELISA  |
| <b>Concentration</b>           | 1 mg/ml   |
| <b>Full name</b>               | BRMS-1 Antibody   |
| <b>Synonyms</b>                | BRMS1; Breast cancer metastasis-suppressor 1  |

**This product is for research use only, not for use in human, therapeutic or diagnostic procedure.**

### Background

Probable global transcription activator SNF2L2 encoded by SMARCA2 is a member of the SWI/SNF family of proteins and is highly similar to the brahma protein of *Drosophila*. Members of this family have helicase and ATPase activities and are thought to regulate transcription of certain genes by altering the chromatin structure around those genes. The encoded protein is part of the large ATP-dependent chromatin remodeling complex SNF/SWI, which is required for transcriptional activation of genes normally repressed by chromatin. Alternatively spliced transcript variants encoding different isoforms have been found for this gene, which contains a trinucleotide repeat (CAG) length polymorphism.

### Recommended Dilution

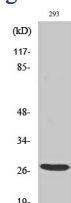
WB: 1: 500 - 1: 2000

IHC: 1: 100 - 1: 300

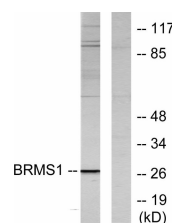
ELISA: 1: 20000

Not yet tested in other applications.

### Images



Western Blot analysis of various cells using BRMS-1 Polyclonal Antibody



Western blot analysis of lysates from 293 cells, using BRMS1 Antibody. The lane on the right is blocked with the synthesized peptide.

## Storage

-20°C for one year

501 Changsheng S Rd, Nanhu Dist, Jiaxing, Zhejiang, China

Tel: 86 21 31007137 | E-mail: [save@bt-laboratory.com](mailto:save@bt-laboratory.com) | [www.bt-laboratory.com](http://www.bt-laboratory.com)