

Bub3 Polyclonal Antibody

Description

Product type	Primary Antibody
Code	BT-AP01011
Host	Rabbit
Isotype	IgG
Size	20ul, 50ul, 100ul
Immunogen	The antiserum was produced against synthesized peptide derived from human BUB3. AA range:279-328
Mol wt	37155
Species reactivity	Human, Mouse, Rat
Clonality	Polyclonal
Recommended application	WB, IHC-p, IF, ELISA
Concentration	1 mg/ml
Full name	Bub3 Antibody
Synonyms	BUB3; Mitotic checkpoint protein BUB3

This product is for research use only, not for use in human, therapeutic or diagnostic procedure.

Background

BUB3 encodes a protein involved in spindle checkpoint function. The encoded protein (BUB3, mitotic checkpoint protein) contains four WD repeat domains and has sequence similarity with the yeast BUB3 protein. Alternate transcriptional splice variants, encoding different isoforms, have been characterized.

Recommended Dilution

WB: 1: 500 - 1: 2000

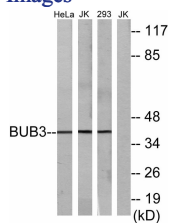
IHC: 1: 100 - 1: 300

IF: 1: 200 - 1: 1000

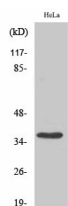
ELISA: 1: 5000

Not yet tested in other applications.

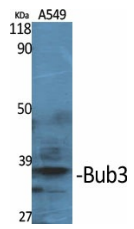
Images



Western blot analysis of lysates from HeLa cells, Jurkat cells, and 293 cells, using BUB3 Antibody. The lane on the right is blocked with the synthesized peptide.



Western Blot analysis of 293 cells using Bub3 Polyclonal Antibody



Western Blot analysis of various cells using Bub3 Polyclonal Antibody

Storage

-20°C for one year

501 Changsheng S Rd, Nanhu Dist, Jiaxing, Zhejiang, China

Tel: 86 21 31007137 | E-mail: save@bt-laboratory.com | www.bt-laboratory.com