

C/EBP Beta Polyclonal Antibody

Description

Product type	Primary Antibody
Code	BT-AP01017
Host	Rabbit
Isotype	IgG
Size	20ul, 50ul, 100ul
Immunogen	Synthesized peptide derived from C/EBP β . at AA range: 150-230
Mol wt	36106
Species reactivity	Human, Mouse, Rat
Clonality	Polyclonal
Recommended application	WB, ELISA
Concentration	1 mg/ml
Full name	C/EBP beta Antibody
Synonyms	CEBPB; LAP; TCF5; PP9092; CCAAT/enhancer-binding protein beta; C/EBP beta; Liver activator protein; Nuclear factor NF-IL6; Transcription factor 5; TCF-5

This product is for research use only, not for use in human, therapeutic or diagnostic procedure.

Background

CEBPB (CCAAT/Enhancer Binding Protein Beta) is a Protein Coding gene. Diseases associated with CEBPB include Short-Rib Thoracic Dysplasia 1 With Or Without Polydactyly and Short-Rib Thoracic Dysplasia 2 With Or Without Polydactyly. Among its related pathways are Transcription factor regulation in adipogenesis and Folate-Alcohol and Cancer Pathway.

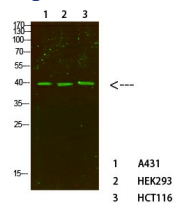
Recommended Dilution

WB: 1: 500 - 2000

ELISA: 1: 10000 - 20000

Not yet tested in other applications.

Images



Western Blot analysis of various cells using primary antibody diluted at 1:500(4°C overnight). Secondary antibody: Goat Anti-rabbit IgG IRDye 800(diluted at 1:5000, 25°C, 1 hour)

Storage

-20°C for one year