

Calnexin Polyclonal Antibody

Description

Product type	Primary Antibody
Code	BT-AP01128
Host	Rabbit
Isotype	IgG
Size	20ul, 50ul, 100ul
Immunogen	Recombinant Protein of Calnexin
Mol wt	67568
Species reactivity	Human, Mouse, Rat
Clonality	Polyclonal
Recommended application	WB, IHC-p
Concentration	1 mg/ml
Full name	Calnexin Antibody
Synonyms	CANX; Calnexin; IP90; Major histocompatibility complex class I antigen-binding protein p88; p90

This product is for research use only, not for use in human, therapeutic or diagnostic procedure.

Background

CANX encodes a member of the calnexin family of molecular chaperones. Calnexin is a calcium-binding, endoplasmic reticulum (ER)-associated protein that interacts transiently with newly synthesized N-linked glycoproteins, facilitating protein folding and assembly. It may also play a central role in the quality control of protein folding by retaining incorrectly folded protein subunits within the ER for degradation. Alternatively spliced transcript variants encoding the same protein have been described

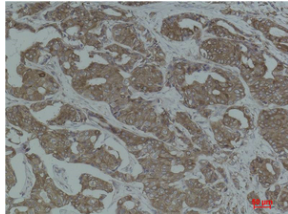
Recommended Dilution

WB: 1: 1000 - 2000

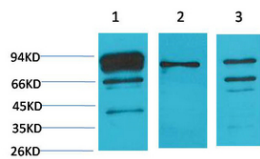
IHC: 1: 200 - 500

Not yet tested in other applications.

Images



Immunohistochemical analysis of paraffin-embedded Human Breast Carcinoma using Calnexin Polyclonal Antibody.



Western blot analysis of 1) HeLa, 2) 3T3, 3) PC12 using Calnexin Polyclonal Antibody. Secondary antibody was diluted at 1:20000

Storage

-20°C for one year

