

Calpain 10 Polyclonal Antibody

Description

Product type	Primary Antibody
Code	BT-AP01129
Host	Rabbit
Isotype	IgG
Size	20ul, 50ul, 100ul
Immunogen	Synthesized peptide derived from the N-terminal region of human Calpain 10.
Mol wt	74938
Species reactivity	Human
Clonality	Polyclonal
Recommended application	WB, ELISA
Concentration	1 mg/ml
Full name	Calpain 10 Antibody
Synonyms	CAPN10; KIAA1845; Calpain-10; Calcium-activated neutral proteinase 10; CANP 10

This product is for research use only, not for use in human, therapeutic or diagnostic procedure.

Background

Calpains represent a ubiquitous, well-conserved family of calcium-dependent cysteine proteases. The calpain proteins are heterodimers consisting of an invariant small subunit and variable large subunits. The large catalytic subunit has four domains: domain I, the N-terminal regulatory domain that is processed upon calpain activation; domain II, the protease domain; domain III, a linker domain of unknown function; and domain IV, the calmodulin-like calcium-binding domain. CAPN10 encodes a large subunit. It is an atypical calpain in that it lacks the calmodulin-like calcium-binding domain and instead has a divergent C-terminal domain. It is similar in organization to calpains 5 and 6. CAPN10 is associated with type 2 or non-insulin-dependent diabetes mellitus (NIDDM), and is located within the NIDDM1 region. Multiple alternative transcript variants have been described for this gene.

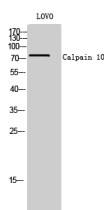
Recommended Dilution

WB: 1: 500 - 1: 2000

ELISA: 1: 40000

Not yet tested in other applications.

Images



Western Blot analysis of LOVO cells using Calpain 10 Polyclonal Antibody

Storage

-20°C for one year