

## Casein Kinase I $\gamma$ 1/2/3 Polyclonal Antibody

### Description

<b>Product type</b>	Primary Antibody
<b>Code</b>	BT-AP01184
<b>Host</b>	Rabbit
<b>Isotype</b>	IgG
<b>Size</b>	20ul, 50ul, 100ul
<b>Immunogen</b>	The antiserum was produced against synthesized peptide derived from human CK-I $\gamma$ 1/2/3. AA range:229-278
<b>Mol wt</b>	48511/47457/51389
<b>Species reactivity</b>	Human, Mouse, Rat
<b>Clonality</b>	Polyclonal
<b>Recommended application</b>	IHC-p, ELISA
<b>Concentration</b>	1 mg/ml
<b>Full name</b>	Casein Kinase I $\gamma$ 1/2/3 Antibody
<b>Synonyms</b>	CSNK1G1; Casein kinase I isoform $\gamma$ -1; CKI- $\gamma$ 1; CSNK1G2; CK1G2; Casein kinase I isoform $\gamma$ -2; CKI- $\gamma$ 2; CSNK1G3; Casein kinase I isoform $\gamma$ -3; CKI- $\gamma$ 3

**This product is for research use only, not for use in human, therapeutic or diagnostic procedure.**

### Background

CSNK1G1 (casein kinase 1  $\gamma$  1) encodes a member of the casein kinase I gene family. This family is comprised of serine/threonine kinases that phosphorylate acidic proteins such as caseins. The encoded kinase plays a role in cell cycle checkpoint arrest in response to stalled replication forks by phosphorylating Claspin. A mutation in CSNK1G1 may be associated with non-syndromic early-onset epilepsy (NSEOE).

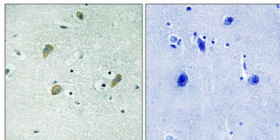
### Recommended Dilution

IHC: 1: 100 - 1: 300

ELISA: 1: 40000

Not yet tested in other applications.

### Images



Immunohistochemical analysis of paraffin-embedded Human brain. Antibody was diluted at 1:100(4 $^{\circ}$  overnight). High-pressure and temperature Tris-EDTA,pH8.0 was used for antigen retrieval. Negative contrl (right) obtained from antibody was pre-absorbed by immunogen peptide.

### Storage

-20 $^{\circ}$ C for one year