

## CAT-4 Polyclonal Antibody

### Description

<b>Product type</b>	Primary Antibody
<b>Code</b>	BT-AP01220
<b>Host</b>	Rabbit
<b>Isotype</b>	IgG
<b>Size</b>	20ul, 50ul, 100ul
<b>Immunogen</b>	The antiserum was produced against synthesized peptide derived from human SLC7A4. AA range:561-610
<b>Mol wt</b>	68268
<b>Species reactivity</b>	Human
<b>Clonality</b>	Polyclonal
<b>Recommended application</b>	WB, ELISA
<b>Concentration</b>	1 mg/ml
<b>Full name</b>	CAT-4 Antibody
<b>Synonyms</b>	SLC7A4; Cationic amino acid transporter 4; CAT-4; CAT4; Solute carrier family 7 member 4

**This product is for research use only, not for use in human, therapeutic or diagnostic procedure.**

### Background

SLC7A4 (Solute Carrier Family 7 Member 4) is a Protein Coding gene. Diseases associated with SLC7A4 include velocardiofacial syndrome and chromophobe adenoma. GO annotations related to this gene include amino acid transmembrane transporter activity and basic amino acid transmembrane transporter activity. An important paralog of this gene is SLC7A3.

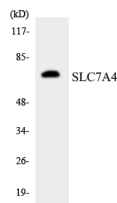
### Recommended Dilution

WB: 1: 500 - 1: 2000

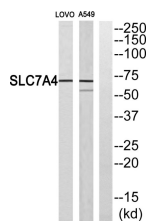
ELISA: 1: 10000

Not yet tested in other applications.

### Images



Western blot analysis of the lysates from K562 cells using SLC7A4 antibody.



Western blot analysis of SLC7A4 Antibody. The lane on the right is blocked with the SLC7A4 peptide.

### Storage

-20°C for one year

