

CCDC45 Polyclonal Antibody

Description

Product type	Primary Antibody
Code	BT-AP01293
Host	Rabbit
Isotype	IgG
Size	20ul, 50ul, 100ul
Immunogen	The antiserum was produced against synthesized peptide derived from human CCDC45. AA range:591-640
Mol wt	95297
Species reactivity	Human, Mouse, Rat
Clonality	Polyclonal
Recommended application	WB, ELISA
Concentration	1 mg/ml
Full name	CCDC45 Antibody
Synonyms	CEP95; CCDC45; CEP45; Centrosomal protein of 95 kDa; Coiled-coil domain-containing protein 45

This product is for research use only, not for use in human, therapeutic or diagnostic procedure.

Background

The coiled-coil domain is a structural motif found in proteins that are involved in a diverse array of biological functions such as the regulation of gene expression, cell division, membrane fusion and drug extrusion and delivery. CCDC45 (coiled-coil domain containing 45) is a 821 amino acid protein encoded by a gene that maps to human chromosome 17q23.3. Chromosome 17 comprises over 2.5% of the human genome and encodes over 1,200 genes. Two key tumor suppressor genes are associated with chromosome 17, namely, p53 and BRCA1. Tumor suppressor p53 is necessary for maintenance of cellular genetic integrity by moderating cell fate through DNA repair versus cell death. Malfunction or loss of p53 expression is associated with malignant cell growth and Li-Fraumeni syndrome. Like p53, BRCA1 is directly involved in DNA repair, though specifically it is recognized as a genetic determinant of early onset breast cancer and predisposition to cancers of the ovary, colon, prostate gland and fallopian tubes.

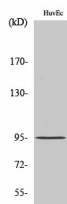
Recommended Dilution

WB: 1: 500 - 1: 2000

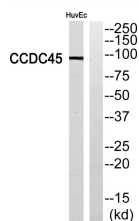
ELISA: 1: 40000

Not yet tested in other applications.

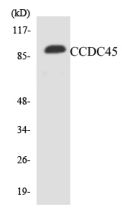
Images



Western Blot analysis of various cells using CCDC45 Polyclonal Antibody



Western blot analysis of CCDC45 Antibody. The lane on the right is blocked with the CCDC45 peptide.



Western blot analysis of the lysates from Jurkat cells using CCDC45 antibody.

Storage

-20°C for one year

501 Changsheng S Rd, Nanhu Dist, Jiaxing, Zhejiang, China

Tel: 86 21 31007137 | E-mail: save@bt-laboratory.com | www.bt-laboratory.com