

CD101 Polyclonal Antibody

Description

Product type	Primary Antibody
Code	BT-AP01332
Host	Rabbit
Isotype	IgG
Size	20ul, 50ul, 100ul
Immunogen	The antiserum was produced against synthesized peptide derived from the Internal region of human CD101. AA range:731-780
Mol wt	115073
Species reactivity	Human
Clonality	Polyclonal
Recommended application	WB, ELISA
Concentration	1 mg/ml
Full name	CD101 Antibody
Synonyms	CD101; EWI101; IGSF2; V7; Immunoglobulin superfamily member 2; IgSF2; Cell surface glycoprotein V7; Glu-Trp-Ile EWI motif-containing protein 101; EWI-101; CD101

This product is for research use only, not for use in human, therapeutic or diagnostic procedure.

Background

CD101 (CD101 Molecule) is a Protein Coding gene. Diseases associated with CD101 include langerhans-cell histiocytosis and histiocytosis. Among its related pathways are Innate Lymphoid Cell Differentiation Pathways. Gene Ontology (GO) annotations related to this gene include hydrolase activity, acting on carbon-nitrogen (but not peptide) bonds, in cyclic amides. An important paralog of this gene is PTGFRN. Plays a role as inhibitor of T-cells proliferation induced by CD3. Inhibits expression of IL2RA on activated T-cells and secretion of IL2. Inhibits tyrosine kinases that are required for IL2 production and cellular proliferation. Inhibits phospholipase C-gamma-1/PLCG1 phosphorylation and subsequent CD3-induced changes in intracellular free calcium. Prevents nuclear translocation of nuclear factor of activated T-cell to the nucleus. Plays a role in the inhibition of T-cell proliferation via IL10 secretion by cutaneous dendritic cells. May be a marker of CD4(+) CD56(+) leukemic tumor cells.

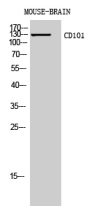
Recommended Dilution

WB: 1: 500 - 1: 2000

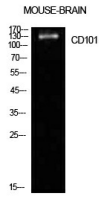
ELISA: 1: 10000

Not yet tested in other applications.

Images



Western Blot analysis of MOUSE-BRAIN cells using CD101 Polyclonal Antibody diluted at 1:1000. Secondary antibody was diluted at 1:20000



Western Blot analysis of mouse brain cells using CD101 Polyclonal Antibody. Antibody was diluted at 1:1000.
Secondary antibody was diluted at 1:20000

Storage

-20°C for one year

501 Changsheng S Rd, Nanhu Dist, Jiaxing, Zhejiang, China

Tel: 86 21 31007137 | E-mail: save@bt-laboratory.com | www.bt-laboratory.com