

CD203c Polyclonal Antibody

Description

Product type	Primary Antibody
Code	BT-AP01402
Host	Rabbit
Isotype	IgG
Size	20ul, 50ul, 100ul
Immunogen	The antiserum was produced against synthesized peptide derived from the Internal region of human ENPP3. AA range:281-330
Mol wt	100124
Species reactivity	Human, Mouse, Rat
Clonality	Polyclonal
Recommended application	WB, IHC-p, ELISA
Concentration	1 mg/ml
Full name	CD203c Antibody
Synonyms	ENPP3; PDNP3; Ectonucleotide pyrophosphatase/phosphodiesterase family member 3; E-NPP 3; Phosphodiesterase I beta; PD-Ibeta; Phosphodiesterase I/nucleotide pyrophosphatase 3; CD203c

This product is for research use only, not for use in human, therapeutic or diagnostic procedure.

Background

Ectonucleotide pyrophosphatase/phosphodiesterase family member 3 encoded by ENPP3 belongs to a series of ectoenzymes that are involved in hydrolysis of extracellular nucleotides. These ectoenzymes possess ATPase and ATP pyrophosphatase activities and are type II transmembrane proteins. Expression of the related rat mRNA has been found in a subset of immature glial cells and in the alimentary tract. The corresponding rat protein has been detected in the pancreas, small intestine, colon, and liver. The human mRNA is expressed in glioma cells, prostate, and uterus. Expression of the human protein has been detected in uterus, basophils, and mast cells. Two transcript variants, one protein coding and the other non-protein coding, have been found for this gene.

Recommended Dilution

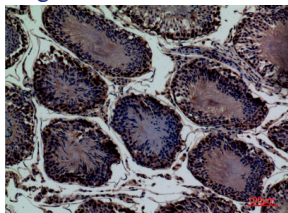
WB: 1: 500 - 1: 2000

IHC-p: 1: 100 - 300

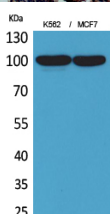
ELISA: 1: 20000

Not yet tested in other applications.

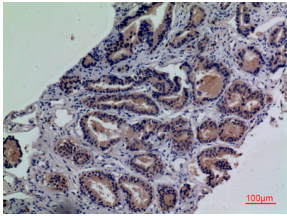
Images



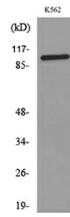
Immunohistochemical analysis of paraffin-embedded rat-testis, antibody was diluted at 1:100



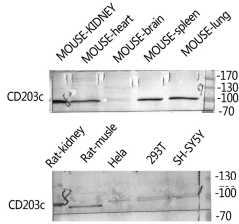
Western Blot analysis of K562, MCF7 cells using CD203c Polyclonal Antibody. Antibody was diluted at 1:2000. Secondary antibody was diluted at 1:20000



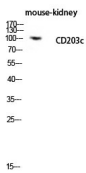
Immunohistochemical analysis of paraffin-embedded human-prostate-cancer, antibody was diluted at 1:100



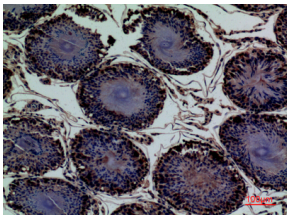
Western blot analysis of lysate from K562 cells, using ENPP3 Antibody.



Western Blot analysis of rat-kidney hela 293T SH-SY5Y MOUSE-KIDNEY MOUSE-SPLEEN MOUSE-LUNG using ENPP3 Polyclonal Antibody. Antibody was diluted at 1:2000. Secondary antibody was diluted at 1:20000



Western blot analysis of mouse-kidney lysis using CD203c antibody. Antibody was diluted at 1:2000. Secondary antibody was diluted at 1:20000



Immunohistochemical analysis of paraffin-embedded rat-testis, antibody was diluted at 1:100

Storage

-20°C for one year

501 Changsheng S Rd, Nanhu Dist, Jiaxing, Zhejiang, China
 Tel: 86 21 31007137 | E-mail: save@bt-laboratory.com | www.bt-laboratory.com