

## CD223 Polyclonal Antibody

### Description

<b>Product type</b>	Primary Antibody
<b>Code</b>	BT-AP01413
<b>Host</b>	Rabbit
<b>Isotype</b>	IgG
<b>Size</b>	20ul, 50ul, 100ul
<b>Immunogen</b>	The antiserum was produced against synthesized peptide derived from the Internal region of human LAG3. AA range:91-140
<b>Mol wt</b>	57437
<b>Species reactivity</b>	Human
<b>Clonality</b>	Polyclonal
<b>Recommended application</b>	WB, ELISA
<b>Concentration</b>	1 mg/ml
<b>Full name</b>	CD223 Antibody
<b>Synonyms</b>	LAG3; FDC; Lymphocyte activation gene 3 protein; LAG-3; Protein FDC; CD223

**This product is for research use only, not for use in human, therapeutic or diagnostic procedure.**

### Background

Lymphocyte-activation protein 3 belongs to Ig superfamily and contains 4 extracellular Ig-like domains. The LAG3 gene contains 8 exons. The sequence data, exon/intron organization, and chromosomal localization all indicate a close relationship of LAG3 to CD4.

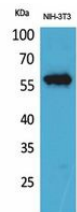
### Recommended Dilution

WB: 1: 500 - 1: 2000

ELISA: 1: 20000

Not yet tested in other applications.

### Images



Western Blot analysis of NIH-3T3 cells using CD223 Polyclonal Antibody. Secondary antibody was diluted at 1:20000

### Storage

-20°C for one year