

## CD28 Polyclonal Antibody

### Description

Product type	Primary Antibody
Code	BT-AP01440
Host	Rabbit
Isotype	IgG
Size	20ul, 50ul, 100ul
Immunogen	Synthesized peptide derived from T-cell-specific surface glycoprotein CD28 at AA range: 11-60
Mol wt	25066
Species reactivity	Human
Clonality	Polyclonal
Recommended application	WB, ELISA
Concentration	1 mg/ml
Full name	CD28 Antibody
Synonyms	CD28; T-cell-specific surface glycoprotein CD28; TP44; CD28

This product is for research use only, not for use in human, therapeutic or diagnostic procedure.

### Background

T-cell-specific surface glycoprotein CD28 encoded by CD28 is essential for T-cell proliferation and survival, cytokine production, and T-helper type-2 development. Several alternatively spliced transcript variants encoding different isoforms have been found for this gene.

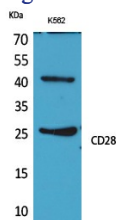
### Recommended Dilution

WB: 1: 500 - 1: 2000

ELISA: 1: 20000

Not yet tested in other applications.

### Images



Western Blot analysis of K562 cells using CD28 Polyclonal Antibody. Secondary antibody was diluted at 1:20000

### Storage

-20°C for one year