

## CD63 Polyclonal Antibody

### Description

Product type	Primary Antibody
Code	BT-AP01525
Host	Rabbit
Isotype	IgG
Size	20ul, 50ul, 100ul
Immunogen	The antiserum was produced against synthesized peptide derived from human CD63. AA range:107-156
Mol wt	25637
Species reactivity	Human
Clonality	Polyclonal
Recommended application	IHC-p, ELISA
Concentration	1 mg/ml
Full name	CD63 Antibody
Synonyms	CD63; MLA1; TSPAN30; CD63 antigen; Granulophysin; Lysosomal-associated membrane protein 3; LAMP-3; Melanoma-associated antigen ME491; OMA81H; Ocular melanoma-associated antigen; Tetraspanin-30; Tspan-

This product is for research use only, not for use in human, therapeutic or diagnostic procedure.

### Background

The protein encoded by CD63 (CD63 molecule) is a member of the transmembrane 4 superfamily, also known as the tetraspanin family. Most of these members are cell-surface proteins that are characterized by the presence of four hydrophobic domains. The proteins mediate signal transduction events that play a role in the regulation of cell development, activation, growth and motility. The encoded protein is a cell surface glycoprotein that is known to complex with integrins. It may function as a blood platelet activation marker. Deficiency of this protein is associated with Hermansky-Pudlak syndrome. Also CD63 has been associated with tumor progression. Alternative splicing results in multiple transcript variants encoding different protein isoforms.

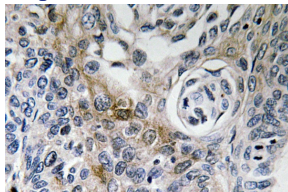
### Recommended Dilution

IHC: 1: 100 - 1: 300

ELISA: 1: 5000

Not yet tested in other applications.

### Images



Immunohistochemistry analysis of CD63 antibody in paraffin-embedded human lung carcinoma tissue.

### Storage

-20°C for one year