

CD69 Polyclonal Antibody

Description

Product type	Primary Antibody
Code	BT-AP01531
Host	Rabbit
Isotype	IgG
Size	20ul, 50ul, 100ul
Immunogen	The antiserum was produced against synthesized peptide derived from the Internal region of human CD69. AA range:91-140
Mol wt	22559
Species reactivity	Human, Mouse, Rat
Clonality	Polyclonal
Recommended application	WB, ELISA
Concentration	1 mg/ml
Full name	CD69 Antibody
Synonyms	CD69; CLEC2C; Early activation antigen CD69; Activation inducer molecule; AIM; BL-AC/P26; C-type lectin domain family 2 member C; EA1; Early T-cell activation antigen p60; GP32/28; Leukocyte surface a

This product is for research use only, not for use in human, therapeutic or diagnostic procedure.

Background

CD69 encodes a member of the calcium dependent lectin superfamily of type II transmembrane receptors. Expression of the encoded protein is induced upon activation of T lymphocytes, and may play a role in proliferation. Furthermore, the protein may act to transmit signals in natural killer cells and platelets.

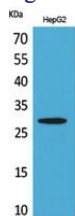
Recommended Dilution

WB: 1: 500 - 1: 2000

ELISA: 1: 20000

Not yet tested in other applications.

Images



Western Blot analysis of HepG2 cells using CD69 Polyclonal Antibody. Secondary antibody was diluted at 1:20000

Storage

-20°C for one year