

CD90 Polyclonal Antibody

Description

Product type	Primary Antibody
Code	BT-AP01561
Host	Rabbit
Isotype	IgG
Size	20ul, 50ul, 100ul
Immunogen	The antiserum was produced against synthesized peptide derived from human THY1. AA range:51-100
Mol wt	17935
Species reactivity	Human
Clonality	Polyclonal
Recommended application	WB, ELISA
Concentration	1 mg/ml
Full name	CD90 Antibody
Synonyms	THY1; Thy-1 membrane glycoprotein; CDw90; Thy-1 antigen; CD antigen CD90

This product is for research use only, not for use in human, therapeutic or diagnostic procedure.

Background

THY1 (Thy-1 cell surface antigen) encodes a cell surface glycoprotein and member of the immunoglobulin superfamily of proteins. The encoded protein is involved in cell adhesion and cell communication in numerous cell types, but particularly in cells of the immune and nervous systems. The encoded protein is widely used as a marker for hematopoietic stem cells. THY1 may function as a tumor suppressor in nasopharyngeal carcinoma. Alternative splicing results in multiple transcript variants.

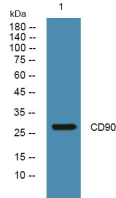
Recommended Dilution

WB: 1: 500 - 1: 2000

ELISA: 1: 10000

Not yet tested in other applications.

Images



Western blot analysis of lysates from Jarkat cells, primary antibody was diluted at 1:1000, 4° over night

Storage

-20°C for one year