

CDC46 Polyclonal Antibody

Description

| | |
|--------------------------------|--|
| Product type | Primary Antibody |
| Code | BT-AP01597 |
| Host | Rabbit |
| Isotype | IgG |
| Size | 20ul, 50ul, 100ul |
| Immunogen | The antiserum was produced against synthesized peptide derived from human MCM5. AA range:21-70 |
| Mol wt | 82286 |
| Species reactivity | Human, Mouse, Rat |
| Clonality | Polyclonal |
| Recommended application | WB, IHC-p, IF, ELISA |
| Concentration | 1 mg/ml |
| Full name | CDC46 Antibody |
| Synonyms | MCM5; CDC46; DNA replication licensing factor MCM5; CDC46 homolog; P1-CDC46 |

This product is for research use only, not for use in human, therapeutic or diagnostic procedure.

Background

Minichromosome maintenance complex component 5 encoded by MCM5 is structurally very similar to the CDC46 protein from *S. cerevisiae*, a protein involved in the initiation of DNA replication. The encoded protein is a member of the MCM family of chromatin-binding proteins and can interact with at least two other members of this family. The encoded protein is upregulated in the transition from the G0 to G1/S phase of the cell cycle and may actively participate in cell cycle regulation.

Recommended Dilution

WB: 1: 500 - 1: 2000

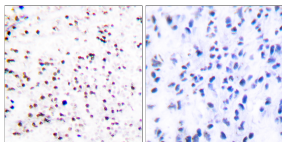
IHC: 1: 100 - 1: 300

IF: 1: 200 - 1: 1000

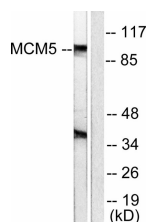
ELISA: 1: 20000

Not yet tested in other applications.

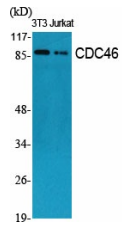
Images



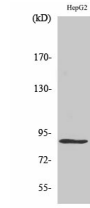
Immunohistochemistry analysis of paraffin-embedded human tonsil tissue, using MCM5 Antibody. The picture on the right is blocked with the synthesized peptide.



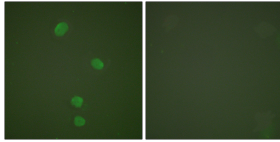
Western blot analysis of lysates from HepG2 cells, using MCM5 Antibody. The lane on the right is blocked with the synthesized peptide.



Western Blot analysis of various cells using CDC46 Polyclonal Antibody cells nucleus.



Western Blot analysis of HepG2 cells using CDC46 Polyclonal Antibody cells nucleus.



Immunofluorescence analysis of HepG2 cells, using MCM5 Antibody. The picture on the right is blocked with the synthesized peptide.

Storage

-20°C for one year

501 Changsheng S Rd, Nanhu Dist, Jiaxing, Zhejiang, China

Tel: 86 21 31007137 | E-mail: save@bt-laboratory.com | www.bt-laboratory.com