

## CDO Polyclonal Antibody

### Description

<b>Product type</b>	Primary Antibody
<b>Code</b>	BT-AP01646
<b>Host</b>	Rabbit
<b>Isotype</b>	IgG
<b>Size</b>	20ul, 50ul, 100ul
<b>Immunogen</b>	The antiserum was produced against synthesized peptide derived from human CDON. AA range:511-560
<b>Mol wt</b>	139234
<b>Species reactivity</b>	Human
<b>Clonality</b>	Polyclonal
<b>Recommended application</b>	IF, ELISA
<b>Concentration</b>	1 mg/ml
<b>Full name</b>	CDO Antibody
<b>Synonyms</b>	CDON; CDO; Cell adhesion molecule-related/down-regulated by oncogenes

**This product is for research use only, not for use in human, therapeutic or diagnostic procedure.**

### Background

CDON encodes a cell surface receptor that is a member of the immunoglobulin superfamily. The encoded protein contains three fibronectin type III domains and five immunoglobulin-like C2-type domains. This protein is a member of a cell-surface receptor complex that mediates cell-cell interactions between muscle precursor cells and positively regulates myogenesis.

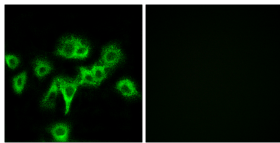
### Recommended Dilution

IF: 1: 200 - 1: 1000

ELISA: 1: 10000

Not yet tested in other applications.

### Images



Immunofluorescence analysis of HeLa cells, using CDON Antibody. The picture on the right is blocked with the synthesized peptide.

### Storage

-20°C for one year

501 Changsheng S Rd, Nanhu Dist, Jiaxing, Zhejiang, China

Tel: 86 21 31007137 | E-mail: [save@bt-laboratory.com](mailto:save@bt-laboratory.com) | [www.bt-laboratory.com](http://www.bt-laboratory.com)