

CHST6 Polyclonal Antibody

Description

| | |
|-------------------------|----------------------------------------------------------------------------------------------------------------------------------------------------------------------------------------------------------|
| Product type | Primary Antibody |
| Code | BT-AP01789 |
| Host | Rabbit |
| Isotype | IgG |
| Size | 20ul, 50ul, 100ul |
| Immunogen | The antiserum was produced against synthesized peptide derived from human CHST6. AA range:331-380 |
| Mol wt | 44099 |
| Species reactivity | Human |
| Clonality | Polyclonal |
| Recommended application | IF, ELISA |
| Concentration | 1 mg/ml |
| Full name | CHST6 Antibody |
| Synonyms | CHST6; Carbohydrate sulfotransferase 6; Corneal N-acetylglucosamine-6-O-sulfotransferase; C-GlcNAc6ST; hCGn6ST; Galactose/N-acetylglucosamine/N-acetylglucosamine 6-O-sulfotransferase 4-beta; GST4-beta |

This product is for research use only, not for use in human, therapeutic or diagnostic procedure.

Background

The protein encoded by CHST6 is an enzyme that catalyzes the transfer of a sulfate group to the GlcNAc residues of keratan. Keratan sulfate helps maintain corneal transparency. Defects in this gene are a cause of macular corneal dystrophy (MCD).

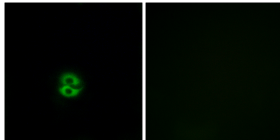
Recommended Dilution

IF: 1: 200 - 1: 1000

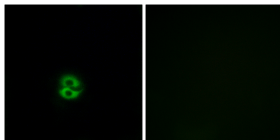
ELISA: 1: 20000

Not yet tested in other applications.

Images



Immunofluorescence analysis of A549 cells, using CHST6 Antibody. The picture on the right is blocked with the synthesized peptide.



Immunofluorescence analysis of A549 cells, using CHST6 Antibody. The picture on the right is blocked with the synthesized peptide.

Storage

-20°C for one year