

Cks1 Polyclonal Antibody

Description

Product type	Primary Antibody
Code	BT-AP01831
Host	Rabbit
Isotype	IgG
Size	20ul, 50ul, 100ul
Immunogen	The antiserum was produced against synthesized peptide derived from human CKS1. AA range:10-59
Mol wt	9660
Species reactivity	Human, Mouse
Clonality	Polyclonal
Recommended application	WB, IF, ELISA
Concentration	1 mg/ml
Full name	Cks1 Antibody
Synonyms	CKS1B; CKS1; PNAS-143; PNAS-16; Cyclin-dependent kinases regulatory subunit 1; CKS-1

This product is for research use only, not for use in human, therapeutic or diagnostic procedure.

Background

CKS1B protein binds to the catalytic subunit of the cyclin dependent kinases and is essential for their biological function. The CKS1B mRNA is found to be expressed in different patterns through the cell cycle in HeLa cells, which reflects a specialized role for the encoded protein. At least two transcript variants have been identified for CKS1B, and it appears that only one of them encodes a protein.

Recommended Dilution

WB: 1: 500 - 1: 2000

IF: 1: 200 - 1: 1000

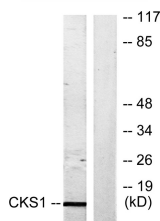
ELISA: 1: 20000

Not yet tested in other applications.

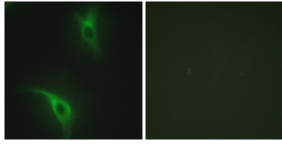
Images



Western Blot analysis of various cells using Cks1 Polyclonal Antibody cells nucleus.



Western blot analysis of lysates from Jurkat cells, treated with serum 20% 15', using CKS1 Antibody. The lane on the right is blocked with the synthesized peptide.



Immunofluorescence analysis of HeLa cells, using CKS1 Antibody. The picture on the right is blocked with the synthesized peptide.

Storage

-20°C for one year

501 Changsheng S Rd, Nanhu Dist, Jiaxing, Zhejiang, China

Tel: 86 21 31007137 | E-mail: save@bt-laboratory.com | www.bt-laboratory.com