

Cleaved-Cathepsin L2 (L114) Polyclonal Antibody

Description

Product type	Primary Antibody
Code	BT-AP01913
Host	Rabbit
Isotype	IgG
Size	20ul, 50ul, 100ul
Immunogen	The antiserum was produced against synthesized peptide derived from human CATL2. AA range:95-144
Mol wt	37329
Species reactivity	Human, Monkey
Clonality	Polyclonal
Recommended application	WB, ELISA
Concentration	1 mg/ml
Full name	Cleaved-Cathepsin L2 (L114) Antibody
Synonyms	CTSL2; CATL2; CTSU; CTSV; Cathepsin L2; Cathepsin U; Cathepsin V

This product is for research use only, not for use in human, therapeutic or diagnostic procedure.

Background

Cathepsin V encoded by CTSV, a member of the peptidase C1 family, is a lysosomal cysteine proteinase that may play an important role in corneal physiology. CTSV is expressed in colorectal and breast carcinomas but not in normal colon, mammary gland, or peritumoral tissues, suggesting a possible role for CTSV in tumor processes. Alternatively spliced variants, encoding the same protein, have been identified.

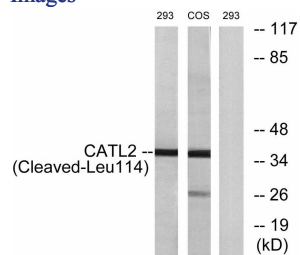
Recommended Dilution

WB: 1: 500 - 1: 2000

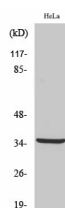
ELISA: 1: 20000

Not yet tested in other applications.

Images



Western blot analysis of lysates from 293 and COS cells, treated with etoposide 25uM 1h, using CATL2 (Cleaved-Leu114) Antibody. The lane on the right is blocked with the synthesized peptide.



Western Blot analysis of various cells using Cleaved-Cathepsin L2 (L114) Polyclonal Antibody

Storage

-20°C for one year

501 Changsheng S Rd, Nanhu Dist, Jiaxing, Zhejiang, China

Tel: 86 21 31007137 | E-mail: save@bt-laboratory.com | www.bt-laboratory.com