

## CNOT2 Polyclonal Antibody

### Description

<b>Product type</b>	Primary Antibody
<b>Code</b>	BT-AP02035
<b>Host</b>	Rabbit
<b>Isotype</b>	IgG
<b>Size</b>	20ul, 50ul, 100ul
<b>Immunogen</b>	The antiserum was produced against synthesized peptide derived from human CNOT2. AA range:67-116
<b>Mol wt</b>	59738
<b>Species reactivity</b>	Human, Mouse, Rat
<b>Clonality</b>	Polyclonal
<b>Recommended application</b>	WB, IHC-p, ELISA
<b>Concentration</b>	1 mg/ml
<b>Full name</b>	CNOT2 Antibody
<b>Synonyms</b>	CNOT2; CDC36; NOT2; HSPC131; MSTP046; CCR4-NOT transcription complex subunit 2; CCR4-associated factor 2

This product is for research use only, not for use in human, therapeutic or diagnostic procedure.

### Background

CNOT2 encodes a subunit of the multi-component CCR4-NOT complex. The CCR4-NOT complex regulates mRNA synthesis and degradation and is also thought to be involved in mRNA splicing, transport and localization. The encoded protein interacts with histone deacetylases and functions as a repressor of polymerase II transcription. Alternatively spliced transcript variants have been observed for CNOT2.

### Recommended Dilution

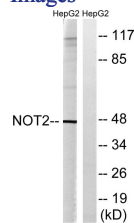
WB: 1: 500 - 1: 2000

IHC: 1: 100 - 1: 300

ELISA: 1: 40000

Not yet tested in other applications.

### Images



Western blot analysis of lysates from HepG2 cells, treated with starved 24h, using CNOT2 Antibody. The lane on the right is blocked with the synthesized peptide.

### Storage

-20°C for one year