

COP1 Polyclonal Antibody

Description

Product type	Primary Antibody
Code	BT-AP02128
Host	Rabbit
Isotype	IgG
Size	20ul, 50ul, 100ul
Immunogen	The antiserum was produced against synthesized peptide derived from human RFWD2. AA range:661-710
Mol wt	80474
Species reactivity	Human, Mouse
Clonality	Polyclonal
Recommended application	WB, ELISA
Concentration	1 mg/ml
Full name	COP1 Antibody
Synonyms	RFWD2; COP1; RNF200; E3 ubiquitin-protein ligase RFWD2; Constitutive photomorphogenesis protein 1 homolog; hCOP1; RING finger and WD repeat domain protein 2; RING finger protein 200

This product is for research use only, not for use in human, therapeutic or diagnostic procedure.

Background

RFWD2 (Ring Finger And WD Repeat Domain 2) is a Protein Coding gene. Among its related pathways are p53 signaling pathway and Antigen processing- Ubiquitination and Proteasome degradation. GO annotations related to this gene include ligase activity and ubiquitin protein ligase activity. An important paralog of this gene is RBBP4.

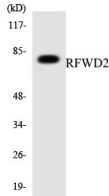
Recommended Dilution

WB: 1: 500 - 1: 2000

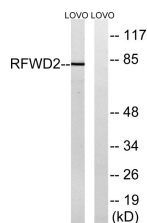
ELISA: 1: 20000

Not yet tested in other applications.

Images



Western blot analysis of the lysates from HepG2 cells using RFWD2 antibody.



Western blot analysis of lysates from LOVO cells, using RFWD2 Antibody. The lane on the right is blocked with the synthesized peptide.

Storage

-20°C for one year

501 Changsheng S Rd, Nanhu Dist, Jiaxing, Zhejiang, China

Tel: 86 21 31007137 | E-mail: save@bt-laboratory.com | www.bt-laboratory.com