

## CREB Polyclonal Antibody

### Description

Product type	Primary Antibody
Code	BT-AP02208
Host	Rabbit
Isotype	IgG
Size	20ul, 50ul, 100ul
Immunogen	Recombinant Protein of Cyclic AMP-responsive element-binding protein 1
Mol wt	36688
Species reactivity	Human
Clonality	Polyclonal
Recommended application	WB
Concentration	1 mg/ml
Full name	CREB Antibody
Synonyms	CREB1; Cyclic AMP-responsive element-binding protein 1; CREB-1; cAMP-responsive element-binding protein 1

This product is for research use only, not for use in human, therapeutic or diagnostic procedure.

### Background

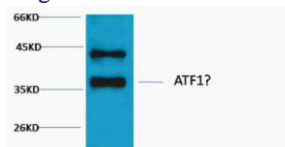
CREB1 encodes a transcription factor (cAMP responsive element binding protein 1) that is a member of the leucine zipper family of DNA binding proteins. cAMP responsive element binding protein 1 binds as a homodimer to the cAMP-responsive element, an octameric palindrome. cAMP responsive element binding protein 1 is phosphorylated by several protein kinases, and induces transcription of genes in response to hormonal stimulation of the cAMP pathway. Alternate splicing of CREB1 results in several transcript variants encoding different isoforms.

### Recommended Dilution

WB: 1: 1000 - 2000

Not yet tested in other applications.

### Images



Western blot analysis of HeLa, Rabbit pAb diluted at 1:2000. Secondary antibody was diluted at 1:20000

### Storage

-20°C for one year