

CREB-1 Polyclonal Antibody

Description

Product type	Primary Antibody
Code	BT-AP02212
Host	Rabbit
Isotype	IgG
Size	20ul, 50ul, 100ul
Immunogen	The antiserum was produced against synthesized peptide derived from human CREB. AA range:91-140
Mol wt	36688
Species reactivity	Human, Mouse, Rat
Clonality	Polyclonal
Recommended application	WB, IHC-p, ELISA
Concentration	1 mg/ml
Full name	CREB-1 Antibody
Synonyms	CREB1; Cyclic AMP-responsive element-binding protein 1; CREB-1; cAMP-responsive element-binding protein 1

This product is for research use only, not for use in human, therapeutic or diagnostic procedure.

Background

CREB1 encodes a transcription factor (cAMP responsive element binding protein 1) that is a member of the leucine zipper family of DNA binding proteins. cAMP responsive element binding protein 1 binds as a homodimer to the cAMP-responsive element, an octameric palindrome. cAMP responsive element binding protein 1 is phosphorylated by several protein kinases, and induces transcription of genes in response to hormonal stimulation of the cAMP pathway. Alternate splicing of CREB1 results in several transcript variants encoding different isoforms.

Recommended Dilution

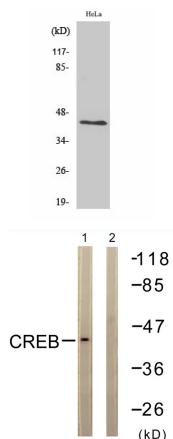
WB: 1: 500 - 1: 2000

IHC: 1: 100 - 1: 300

ELISA: 1: 5000

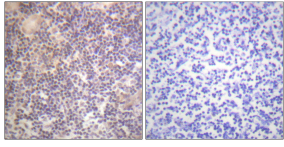
Not yet tested in other applications.

Images



Western Blot analysis of various cells using CREB-1 Polyclonal Antibody diluted at 1:500

Western blot analysis of lysates from HeLa cells, treated with Insulin 0.01U/ml 15', using CREB Antibody. The lane on the right is blocked with the synthesized peptide.



Immunohistochemistry analysis of paraffin-embedded human tonsil tissue, using CREB Antibody.
The picture on the right is blocked with the synthesized peptide.

Storage

-20°C for one year

501 Changsheng S Rd, Nanhu Dist, Jiaxing, Zhejiang, China

Tel: 86 21 31007137 | E-mail: save@bt-laboratory.com | www.bt-laboratory.com