

## CREB3L2 Polyclonal Antibody

### Description

|                                |   |
|--------------------------------|---|
| <b>Product type</b>            | Primary Antibody  |
| <b>Code</b>                    | BT-AP02217  |
| <b>Host</b>                    | Rabbit  |
| <b>Isotype</b>                 | IgG   |
| <b>Size</b>                    | 20ul, 50ul, 100ul   |
| <b>Immunogen</b>               | The antiserum was produced against synthesized peptide derived from human CREB3L2. AA range:269-318   |
| <b>Mol wt</b>                  | 57429   |
| <b>Species reactivity</b>      | Human, Mouse, Rat   |
| <b>Clonality</b>               | Polyclonal  |
| <b>Recommended application</b> | WB, ELISA   |
| <b>Concentration</b>           | 1 mg/ml   |
| <b>Full name</b>               | CREB3L2 Antibody  |
| <b>Synonyms</b>                | CREB3L2; BBF2H7; Cyclic AMP-responsive element-binding protein 3-like protein 2; cAMP-responsive element-binding protein 3-like protein 2; BBF2 human homolog on chromosome 7 |

This product is for research use only, not for use in human, therapeutic or diagnostic procedure.

### Background

CREB3L2 encodes a member of the oasis bZIP transcription factor family. Members of this family can dimerize but form homodimers only. The encoded protein (cAMP responsive element binding protein 3 like 2) is a transcriptional activator. Translocations between this gene on chromosome 7 and the gene fused in sarcoma on chromosome 16 can be found in some tumors. Multiple transcript variants encoding different isoforms have been found for CREB3L2.

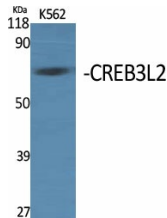
### Recommended Dilution

WB: 1: 500 - 1: 2000

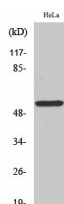
ELISA: 1: 10000

Not yet tested in other applications.

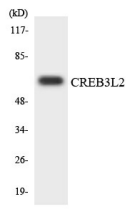
### Images



Western Blot analysis of various cells using CREB3L2 Polyclonal Antibody



Western Blot analysis of HeLa cells using CREB3L2 Polyclonal Antibody



Western blot analysis of the lysates from 293 cells using CREB3L2 antibody.

### Storage

-20°C for one year

501 Changsheng S Rd, Nanhu Dist, Jiaxing, Zhejiang, China

Tel: 86 21 31007137 | E-mail: [save@bt-laboratory.com](mailto:save@bt-laboratory.com) | [www.bt-laboratory.com](http://www.bt-laboratory.com)