

CYP26B1 Polyclonal Antibody

Description

Product type	Primary Antibody
Code	BT-AP02389
Host	Rabbit
Isotype	IgG
Size	20ul, 50ul, 100ul
Immunogen	Synthetic peptide from human protein at AA range: 391-440
Mol wt	57513
Species reactivity	Human, Mouse, Rat
Clonality	Polyclonal
Recommended application	WB, ELISA
Concentration	1 mg/ml
Full name	CYP26B1 Antibody
Synonyms	CYP26B1 CYP26A2 P450RA12

This product is for research use only, not for use in human, therapeutic or diagnostic procedure.

Background

CYP26B1 (cytochrome P450 family 26 subfamily B member 1) encodes a member of the cytochrome P450 superfamily. The cytochrome P450 proteins are monooxygenases which catalyze many reactions involved in drug metabolism and synthesis of cholesterol, steroids and other lipids. The encoded protein is localized to the endoplasmic reticulum, and functions as a critical regulator of all-trans retinoic acid levels by the specific inactivation of all-trans retinoic acid to hydroxylated forms. Mutations in CYP26B1 are associated with radiohumeral fusions and other skeletal and craniofacial anomalies, and increased levels of the encoded protein are associated with atherosclerotic lesions. Alternative splicing results in multiple transcript variants.

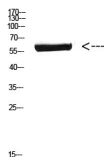
Recommended Dilution

WB: 1: 500 - 2000

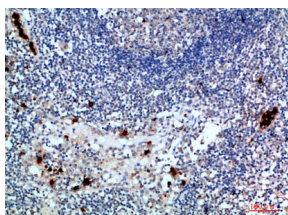
ELISA: 1: 10000 - 20000

Not yet tested in other applications.

Images



Western Blot analysis of mouse-brain cells using Antibody diluted at 800. Secondary antibody was diluted at 1:20000



Immunohistochemical analysis of paraffin-embedded human-lymph, antibody was diluted at 1:200

Storage

-20°C for one year

501 Changsheng S Rd, Nanhu Dist, Jiaxing, Zhejiang, China

Tel: 86 21 31007137 | E-mail: save@bt-laboratory.com | www.bt-laboratory.com