

D4DR Polyclonal Antibody

Description

Product type	Primary Antibody
Code	BT-AP02487
Host	Rabbit
Isotype	IgG
Size	20ul, 50ul, 100ul
Immunogen	The antiserum was produced against synthesized peptide derived from human DRD4. AA range:355-404
Mol wt	48361
Species reactivity	Human, Mouse, Rat
Clonality	Polyclonal
Recommended application	WB, IF, ELISA
Concentration	1 mg/ml
Full name	D4DR Antibody
Synonyms	DRD4; D(4) dopamine receptor; D(2C) dopamine receptor; Dopamine D4 receptor

This product is for research use only, not for use in human, therapeutic or diagnostic procedure.

Background

DRD4 encodes the D4 subtype of the dopamine receptor. The D4 subtype is a G-protein coupled receptor which inhibits adenylyl cyclase. It is a target for drugs which treat schizophrenia and Parkinson disease. Mutations in DRD4 have been associated with various behavioral phenotypes, including autonomic nervous system dysfunction, attention deficit/hyperactivity disorder, and the personality trait of novelty seeking. DRD4 contains a polymorphic number (2-10 copies) of tandem 48 nt repeats; the sequence shown contains four repeats.

Recommended Dilution

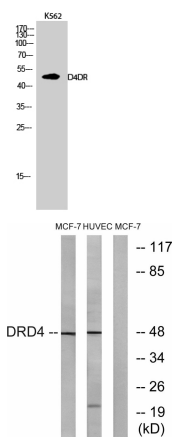
WB: 1: 500 - 1: 2000

IF: 1: 200 - 1: 1000

ELISA: 1: 40000

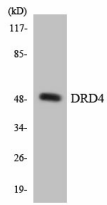
Not yet tested in other applications.

Images

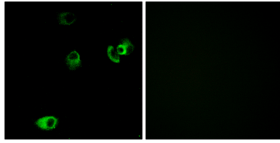


Western Blot analysis of K562 cells using D4DR Polyclonal Antibody

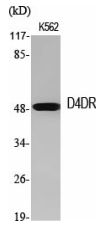
Western blot analysis of lysates from MCF-7 and HUVEC cells, using DRD4 Antibody. The lane on the right is blocked with the synthesized peptide.



Western blot analysis of the lysates from RAW264.7 cells using DRD4 antibody.



Immunofluorescence analysis of MCF7 cells, using DRD4 Antibody. The picture on the right is blocked with the synthesized peptide.



Western Blot analysis of various cells using D4DR Polyclonal Antibody

Storage

-20°C for one year

501 Changsheng S Rd, Nanhu Dist, Jiaxing, Zhejiang, China

Tel: 86 21 31007137 | E-mail: save@bt-laboratory.com | www.bt-laboratory.com