

## DCAMKL2 Polyclonal Antibody

### Description

<b>Product type</b>	Primary Antibody
<b>Code</b>	BT-AP02515
<b>Host</b>	Rabbit
<b>Isotype</b>	IgG
<b>Size</b>	20ul, 50ul, 100ul
<b>Immunogen</b>	The antiserum was produced against synthesized peptide derived from human DCLK2. AA range:1-50
<b>Mol wt</b>	83612
<b>Species reactivity</b>	Human, Mouse
<b>Clonality</b>	Polyclonal
<b>Recommended application</b>	WB, IF, ELISA
<b>Concentration</b>	1 mg/ml
<b>Full name</b>	DCAMKL2 Antibody
<b>Synonyms</b>	DCLK2; DCAMKL2; DCDC3B; DCK2; Serine/threonine-protein kinase DCLK2; CaMK-like CREB regulatory kinase 2; CL2; CLICK-II; CLICK2; Doublecortin domain-containing protein 3B; Doublecortin-like and CAM kin

**This product is for research use only, not for use in human, therapeutic or diagnostic procedure.**

### Background

DCLK2 encodes a member of the protein kinase superfamily and the doublecortin family. Doublecortin like kinase 2 encoded by DCLK2 contains two N-terminal doublecortin domains, which bind microtubules and regulate microtubule polymerization, a C-terminal serine/threonine protein kinase domain, which shows substantial homology to Ca<sup>2+</sup>/calmodulin-dependent protein kinase, and a serine/proline-rich domain in between the doublecortin and the protein kinase domains, which mediates multiple protein-protein interactions. The microtubule-polymerizing activity of the encoded protein is independent of its protein kinase activity. Mouse studies show that the DCX gene, another family member, and DCLK2 share function in the establishment of hippocampal organization and that their absence results in a severe epileptic phenotype and lethality, as described in human patients with lissencephaly. Multiple alternatively spliced transcript variants have been identified.

### Recommended Dilution

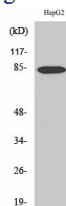
WB: 1: 500 - 1: 2000

IF: 1: 200 - 1: 1000

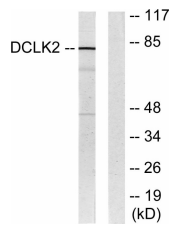
ELISA: 1: 10000

Not yet tested in other applications.

### Images



Western Blot analysis of various cells using DCAMKL2 Polyclonal Antibody



Western blot analysis of lysates from HepG2 cells, using DCLK2 Antibody. The lane on the right is blocked with the synthesized peptide.

### Storage

-20°C for one year

501 Changsheng S Rd, Nanhu Dist, Jiaxing, Zhejiang, China

Tel: 86 21 31007137 | E-mail: [save@bt-laboratory.com](mailto:save@bt-laboratory.com) | [www.bt-laboratory.com](http://www.bt-laboratory.com)