

## DGAT2L6 Polyclonal Antibody

### Description

<b>Product type</b>	Primary Antibody
<b>Code</b>	BT-AP02578
<b>Host</b>	Rabbit
<b>Isotype</b>	IgG
<b>Size</b>	20ul, 50ul, 100ul
<b>Immunogen</b>	The antiserum was produced against synthesized peptide derived from human DGAT2L6. AA range:271-320
<b>Mol wt</b>	38593
<b>Species reactivity</b>	Human
<b>Clonality</b>	Polyclonal
<b>Recommended application</b>	WB, ELISA
<b>Concentration</b>	1 mg/ml
<b>Full name</b>	DGAT2L6 Antibody
<b>Synonyms</b>	DGAT2L6; DC3; Diacylglycerol O-acyltransferase 2-like protein 6; Diacylglycerol O-acyltransferase candidate 3; hDC3

This product is for research use only, not for use in human, therapeutic or diagnostic procedure.

### Background

DGAT2L6 is a member of the diacylglycerol acyltransferase 2 family. The encoded protein is a putative acyltransferase and is most likely involved in the synthesis of di- or triacylglycerol, however its substrate specificity is currently unknown.

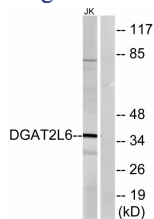
### Recommended Dilution

WB: 1: 500 - 1: 2000

ELISA: 1: 10000

Not yet tested in other applications.

### Images



Western blot analysis of lysates from Jurkat cells, using DGAT2L6 Antibody. The lane on the right is blocked with the synthesized peptide.

### Storage

-20°C for one year