

## FACR1 Rabbit Polyclonal Antibody

### Description

Product type	Primary Antibody
Code	BT-AP02620
Host	Rabbit
Isotype	IgG
Size	20ul, 50ul, 100ul
Immunogen	Synthesized peptide derived from human FACR1
Mol wt	56650
Species reactivity	Human, Mouse, Rat
Clonality	Polyclonal
Recommended application	WB
Concentration	1 mg/ml
Full name	FACR1
Synonyms	FACR1

This product is for research use only, not for use in human, therapeutic or diagnostic procedure.

### Background

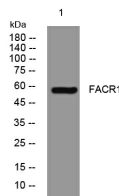
The protein encoded by this gene is required for the reduction of fatty acids to fatty alcohols| a process that is required for the synthesis of monoesters and ether lipids. NADPH is required as a cofactor in this reaction| and 16-18 carbon saturated and unsaturated fatty acids are the preferred substrate. This is a peroxisomal membrane protein| and studies suggest that the N-terminus contains a large catalytic domain located on the outside of the peroxisome| while the C-terminus is exposed to the matrix of the peroxisome. Studies indicate that the regulation of this protein is dependent on plasmalogen levels. Mutations in this gene have been associated with individuals affected by severe intellectual disability| early-onset epilepsy| microcephaly| congenital cataracts| growth retardation| and spasticity (PMID: 25439727). A pseudogene of this gene is located on chromosome 13.

### Recommended Dilution

WB: 1: 500 - 1: 2000

Not yet tested in other applications.

### Images



Western blot analysis of lysates from HeLa cells, primary antibody was diluted at 1:1000, 4°C overnight

### Storage

-20°C for 1 year