

## Dmc1 Polyclonal Antibody

### Description

<b>Product type</b>	Primary Antibody
<b>Code</b>	BT-AP02643
<b>Host</b>	Rabbit
<b>Isotype</b>	IgG
<b>Size</b>	20ul, 50ul, 100ul
<b>Immunogen</b>	The antiserum was produced against synthesized peptide derived from human DMC1. AA range:61-110
<b>Mol wt</b>	37681
<b>Species reactivity</b>	Human, Mouse
<b>Clonality</b>	Polyclonal
<b>Recommended application</b>	IHC-p, ELISA
<b>Concentration</b>	1 mg/ml
<b>Full name</b>	Dmc1 Antibody
<b>Synonyms</b>	DMC1; DMC1H; LIM15; Meiotic recombination protein DMC1/LIM15 homolog

**This product is for research use only, not for use in human, therapeutic or diagnostic procedure.**

### Background

DMC1 encodes a member of the superfamily of recombinases (also called DNA strand-exchange proteins). Recombinases are important for repairing double-strand DNA breaks during mitosis and meiosis. DNA meiotic recombinase 1, which is evolutionarily conserved, is reported to be essential for meiotic homologous recombination and may thus play an important role in generating diversity of genetic information. Alternative splicing results in multiple transcript variants.

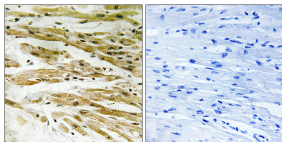
### Recommended Dilution

IHC: 1: 100 - 1: 300

ELISA: 1: 10000

Not yet tested in other applications.

### Images



Immunohistochemistry analysis of paraffin-embedded human heart tissue, using DMC1 Antibody. The picture on the right is blocked with the synthesized peptide.

### Storage

-20°C for one year