

## DMPK Polyclonal Antibody

### Description

<b>Product type</b>	Primary Antibody
<b>Code</b>	BT-AP02647
<b>Host</b>	Rabbit
<b>Isotype</b>	IgG
<b>Size</b>	20ul, 50ul, 100ul
<b>Immunogen</b>	The antiserum was produced against synthesized peptide derived from human DMPK. AA range:11-60
<b>Mol wt</b>	70357
<b>Species reactivity</b>	Human
<b>Clonality</b>	Polyclonal
<b>Recommended application</b>	WB, ELISA
<b>Concentration</b>	1 mg/ml
<b>Full name</b>	DMPK Antibody
<b>Synonyms</b>	DMPK; DM1PK; MDPK; Myotonin-protein kinase; MT-PK; DM-kinase; DMK; DM1 protein kinase; DMPK; Myotonic dystrophy protein kinase

This product is for research use only, not for use in human, therapeutic or diagnostic procedure.

### Background

Dystrophia myotonica protein kinase encoded by DMPK is a serine-threonine kinase that is closely related to other kinases that interact with members of the Rho family of small GTPases. Substrates for this enzyme include myogenin, the beta-subunit of the L-type calcium channels, and phospholemman. The 3' untranslated region of this gene contains 5-38 copies of a CTG trinucleotide repeat. Expansion of this unstable motif to 50-5,000 copies causes myotonic dystrophy type I, which increases in severity with increasing repeat element copy number. Repeat expansion is associated with condensation of local chromatin structure that disrupts the expression of genes in this region. Several alternatively spliced transcript variants of DMPK have been described, but the full-length nature of some of these variants has not been determined.

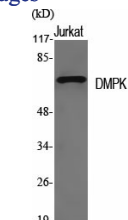
### Recommended Dilution

WB: 1: 500 - 1: 2000

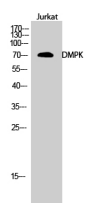
ELISA: 1: 40000

Not yet tested in other applications.

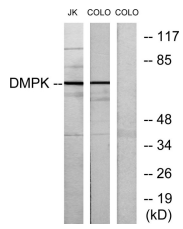
### Images



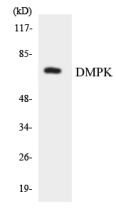
Western Blot analysis of various cells using DMPK Polyclonal Antibody



Western Blot analysis of Jurkat cells using DMPK Polyclonal Antibody



Western blot analysis of lysates from Jurkat and COLO205 cells, using DMPK Antibody. The lane on the right is blocked with the synthesized peptide.



Western blot analysis of the lysates from HT-29 cells using DMPK antibody.

### Storage

-20°C for one year

501 Changsheng S Rd, Nanhu Dist, Jiaxing, Zhejiang, China

Tel: 86 21 31007137 | E-mail: [save@bt-laboratory.com](mailto:save@bt-laboratory.com) | [www.bt-laboratory.com](http://www.bt-laboratory.com)