

## DNA pol iota Polyclonal Antibody

### Description

<b>Product type</b>	Primary Antibody
<b>Code</b>	BT-AP02665
<b>Host</b>	Rabbit
<b>Isotype</b>	IgG
<b>Size</b>	20ul, 50ul, 100ul
<b>Immunogen</b>	The antiserum was produced against synthesized peptide derived from human POLI. AA range:641-690
<b>Mol wt</b>	80346
<b>Species reactivity</b>	Human
<b>Clonality</b>	Polyclonal
<b>Recommended application</b>	WB, ELISA
<b>Concentration</b>	1 mg/ml
<b>Full name</b>	DNA pol iota Antibody
<b>Synonyms</b>	POLI; RAD30B; DNA polymerase iota; Eta2; RAD30 homolog B

**This product is for research use only, not for use in human, therapeutic or diagnostic procedure.**

### Background

POLI (Polymerase (DNA) Iota) is a Protein Coding gene. Among its related pathways are DNA Double-Strand Break Repair and Fanconi anemia pathway. GO annotations related to this gene include damaged DNA binding and DNA-directed DNA polymerase activity. An important paralog of this gene is POLH. rror-prone DNA polymerase specifically involved in DNA repair. Plays an important role in translesion synthesis, where the normal high-fidelity DNA polymerases cannot proceed and DNA synthesis stalls. Favors Hoogsteen base-pairing in the active site. Inserts the correct base with high-fidelity opposite an adenosine template. Exhibits low fidelity and efficiency opposite a thymidine template, where it will preferentially insert guanosine. May play a role in hypermutation of immunoglobulin genes. Forms a Schiff base with 5-deoxyribose phosphate at abasic sites, but may not have lyase activity.

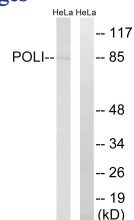
### Recommended Dilution

WB: 1: 500 - 1: 2000

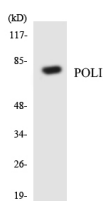
ELISA: 1: 40000

Not yet tested in other applications.

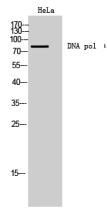
### Images



Western blot analysis of lysates from HeLa cells, using POLI Antibody. The lane on the right is blocked with the synthesized peptide.



Western blot analysis of the lysates from HeLa cells using POLI antibody.



Western Blot analysis of HeLa cells using DNA pol ̑ Polyclonal Antibody cells nucleus.

### Storage

-20°C for one year

501 Changsheng S Rd, Nanhu Dist, Jiaxing, Zhejiang, China

Tel: 86 21 31007137 | E-mail: [save@bt-laboratory.com](mailto:save@bt-laboratory.com) | [www.bt-laboratory.com](http://www.bt-laboratory.com)