

DNA-PKCS Polyclonal Antibody

Description

Product type	Primary Antibody
Code	BT-AP02678
Host	Rabbit
Isotype	IgG
Size	20ul, 50ul, 100ul
Immunogen	The antiserum was produced against synthesized peptide derived from human DNA-PK. AA range:4061-4110
Mol wt	469089
Species reactivity	Human, Mouse
Clonality	Polyclonal
Recommended application	WB, IHC-p, IF, ELISA
Concentration	1 mg/ml
Full name	DNA-PKCS Antibody
Synonyms	PRKDC; HYRC; HYRC1; DNA-dependent protein kinase catalytic subunit; DNA-PK catalytic subunit; DNA-PKcs; DNPk1; p460

This product is for research use only, not for use in human, therapeutic or diagnostic procedure.

Background

PRKDC encodes the catalytic subunit of the DNA-dependent protein kinase (DNA-PK). It functions with the Ku70/Ku80 heterodimer protein in DNA double strand break repair and recombination. The protein (protein kinase, DNA-activated, catalytic polypeptide) encoded is a member of the PI3/PI4-kinase family.

Recommended Dilution

WB: 1: 500 - 1: 2000

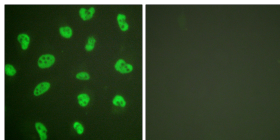
IHC: 1: 100 - 1: 300

IF: 1: 200 - 1: 1000

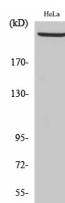
ELISA: 1: 20000

Not yet tested in other applications.

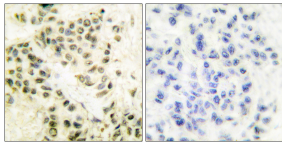
Images



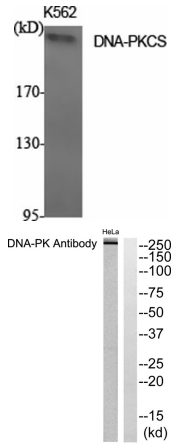
Immunofluorescence analysis of HeLa cells, using DNA-PK Antibody. The picture on the right is blocked with the synthesized peptide.



Western Blot analysis of HeLa cells using DNA-PKCS Polyclonal Antibody diluted at 1:2000 cells nucleus.



Immunohistochemistry analysis of paraffin-embedded human breast carcinoma tissue, using DNA-PK Antibody. The picture on the right is blocked with the synthesized peptide.



Western Blot analysis of various cells using DNA-PKCS Polyclonal Antibody diluted at 1:2000 cells nucleus.

Western blot analysis of lysates from HeLa cells, using DNA-PK Antibody. The lane on the right is blocked with the synthesized peptide.

Storage

-20°C for one year

501 Changsheng S Rd, Nanhu Dist, Jiaxing, Zhejiang, China

Tel: 86 21 31007137 | E-mail: save@bt-laboratory.com | www.bt-laboratory.com