

DQX1 Polyclonal Antibody

Description

Product type	Primary Antibody
Code	BT-AP02723
Host	Rabbit
Isotype	IgG
Size	20ul, 50ul, 100ul
Immunogen	The antiserum was produced against synthesized peptide derived from human DQX1. AA range:551-600
Mol wt	79476
Species reactivity	Human, Mouse, Monkey
Clonality	Polyclonal
Recommended application	WB, ELISA
Concentration	1 mg/ml
Full name	DQX1 Antibody
Synonyms	DQX1; ATP-dependent RNA helicase DQX1; DEAQ box polypeptide 1

This product is for research use only, not for use in human, therapeutic or diagnostic procedure.

Background

DQX1 (DEAQ box RNA-dependent ATPase 1), also known as FLJ23757, is a 71 amino acid protein that contains one helicase ATP-binding domain and one helicase C-terminal domain. Localized to the nucleus, DQX1 catalyzes the conversion of ATP to ADP and a phosphate. Expressed as three isoforms produced by alternative splicing events, DQX1 is encoded by a gene that maps to human chromosome 2. As the second largest human chromosome, chromosome 2 makes up approximately 8% of the human genome and contains 237 million bases encoding over 1,400 genes. A number of genetic diseases are linked to genes on chromosome 2, including Harlequin ichthyosis, sitosterolemia and Alström syndrome.

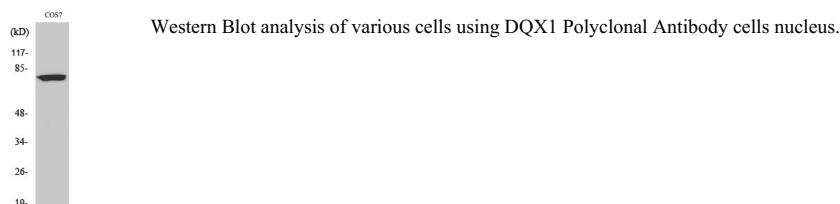
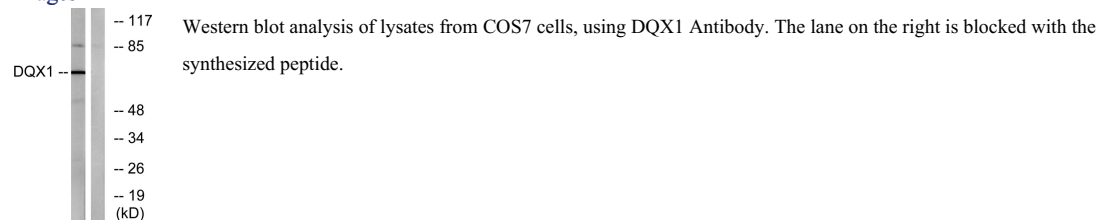
Recommended Dilution

WB: 1: 500 - 1: 2000

ELISA: 1: 20000

Not yet tested in other applications.

Images



Storage

-20°C for one year

501 Changsheng S Rd, Nanhu Dist, Jiaxing, Zhejiang, China

Tel: 86 21 31007137 | E-mail: save@bt-laboratory.com | www.bt-laboratory.com