

## E2F-5 Polyclonal Antibody

### Description

|                                |  |
|--------------------------------|--|
| <b>Product type</b>            | Primary Antibody   |
| <b>Code</b>                    | BT-AP02795   |
| <b>Host</b>                    | Rabbit   |
| <b>Isotype</b>                 | IgG  |
| <b>Size</b>                    | 20ul, 50ul, 100ul  |
| <b>Immunogen</b>               | The antiserum was produced against synthesized peptide derived from human E2F-5. AA range:93-142 |
| <b>Mol wt</b>                  | 37610  |
| <b>Species reactivity</b>      | Human, Mouse, Rat  |
| <b>Clonality</b>               | Polyclonal   |
| <b>Recommended application</b> | WB, ELISA  |
| <b>Concentration</b>           | 1 mg/ml  |
| <b>Full name</b>               | E2F-5 Antibody   |
| <b>Synonyms</b>                | E2F5; Transcription factor E2F5; E2F-5   |

**This product is for research use only, not for use in human, therapeutic or diagnostic procedure.**

### Background

The E2F transcription factor 5 encoded by E2F5 is a member of the E2F family of transcription factors. The E2F family plays a crucial role in the control of cell cycle and action of tumor suppressor proteins and is also a target of the transforming proteins of small DNA tumor viruses. The E2F proteins contain several evolutionarily conserved domains that are present in most members of the family. These domains include a DNA binding domain, a dimerization domain which determines interaction with the differentiation regulated transcription factor proteins (DP), a transactivation domain enriched in acidic amino acids, and a tumor suppressor protein association domain which is embedded within the transactivation domain. This protein is differentially phosphorylated and is expressed in a wide variety of human tissues. It has higher identity to E2F4 than to other family members. Both this protein and E2F4 interact with tumor suppressor proteins p130 and p107, but not with pRB. Alternative splicing results in multiple variants encoding different isoforms.

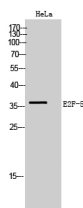
### Recommended Dilution

WB: 1: 500 - 1: 2000

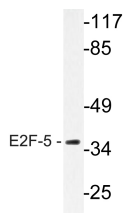
ELISA: 1: 20000

Not yet tested in other applications.

### Images



Western Blot analysis of HeLa cells using E2F-5 Polyclonal Antibody



Western blot analysis of lysate from HeLa cells, using E2F-5 antibody.

## Storage

-20°C for one year

501 Changsheng S Rd, Nanhu Dist, Jiaxing, Zhejiang, China

Tel: 86 21 31007137 | E-mail: [save@bt-laboratory.com](mailto:save@bt-laboratory.com) | [www.bt-laboratory.com](http://www.bt-laboratory.com)