

EAAT1 Polyclonal Antibody

Description

Product type	Primary Antibody
Code	BT-AP02800
Host	Rabbit
Isotype	IgG
Size	20ul, 50ul, 100ul
Immunogen	The antiserum was produced against synthesized peptide derived from human EAAT1. AA range:492-541
Mol wt	59572
Species reactivity	Human
Clonality	Polyclonal
Recommended application	WB, ELISA
Concentration	1 mg/ml
Full name	EAAT1 Antibody
Synonyms	SLC1A3; EAAT1; GLAST; GLAST1; Excitatory amino acid transporter 1; Sodium-dependent glutamate/aspartate transporter 1; GLAST-1; Solute carrier family 1 member 3

This product is for research use only, not for use in human, therapeutic or diagnostic procedure.

Background

SLC1A3 encodes a member of a high affinity glutamate transporter family. SLC1A3 functions in the termination of excitatory neurotransmission in central nervous system. Mutations are associated with episodic ataxia, Type 6. Alternative splicing results in multiple transcript variants.

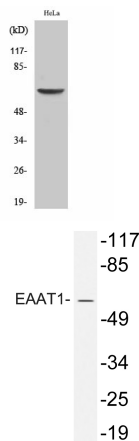
Recommended Dilution

WB: 1: 500 - 1: 2000

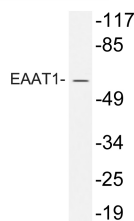
ELISA: 1: 10000

Not yet tested in other applications.

Images



Western Blot analysis of various cells using EAAT1 Polyclonal Antibody



Western blot analysis of lysate from HeLa cells, using EAAT1 antibody.

Storage

-20°C for one year

501 Changsheng S Rd, Nanhu Dist, Jiaxing, Zhejiang, China

Tel: 86 21 31007137 | E-mail: save@bt-laboratory.com | www.bt-laboratory.com