

eEF2K Polyclonal Antibody

Description

Product type	Primary Antibody
Code	BT-AP02842
Host	Rabbit
Isotype	IgG
Size	20ul, 50ul, 100ul
Immunogen	The antiserum was produced against synthesized peptide derived from human eEF2K. AA range:331-380
Mol wt	82172
Species reactivity	Human, Rat
Clonality	Polyclonal
Recommended application	WB, IHC-p, ELISA
Concentration	1 mg/ml
Full name	eEF2K Antibody
Synonyms	EEF2K; Eukaryotic elongation factor 2 kinase; eEF-2 kinase; eEF-2K; Calcium/calmodulin-dependent eukaryotic elongation factor 2 kinase

This product is for research use only, not for use in human, therapeutic or diagnostic procedure.

Background

EEF2K encodes a highly conserved protein kinase (eukaryotic elongation factor 2 kinase) in the calmodulin-mediated signaling pathway that links activation of cell surface receptors to cell division. This kinase is involved in the regulation of protein synthesis. It phosphorylates eukaryotic elongation factor 2 (EEF2) and thus inhibits the EEF2 function. The activity of eukaryotic elongation factor 2 kinase is increased in many cancers and may be a valid target for anti-cancer treatment.

Recommended Dilution

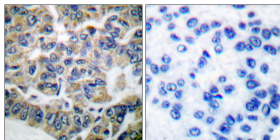
WB: 1: 500 - 1: 2000

IHC: 1: 100 - 1: 300

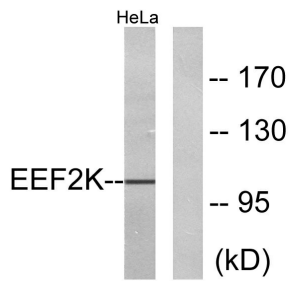
ELISA: 1: 20000

Not yet tested in other applications.

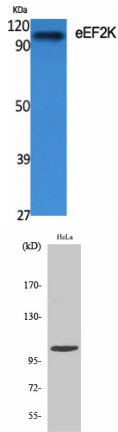
Images



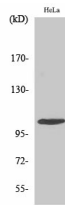
Immunohistochemistry analysis of paraffin-embedded human breast carcinoma tissue, using eEF2K Antibody. The picture on the right is blocked with the synthesized peptide.



Western blot analysis of lysates from HeLa cells, treated with serum 10% 15', using eEF2K Antibody. The lane on the right is blocked with the synthesized peptide.



Western Blot analysis of various cells using eEF2K Polyclonal Antibody diluted at 1:500



Western Blot analysis of HeLa cells using eEF2K Polyclonal Antibody diluted at 1:500

Storage

-20°C for one year

501 Changsheng S Rd, Nanhui Dist, Jiaxing, Zhejiang, China

Tel: 86 21 31007137 | E-mail: save@bt-laboratory.com | www.bt-laboratory.com